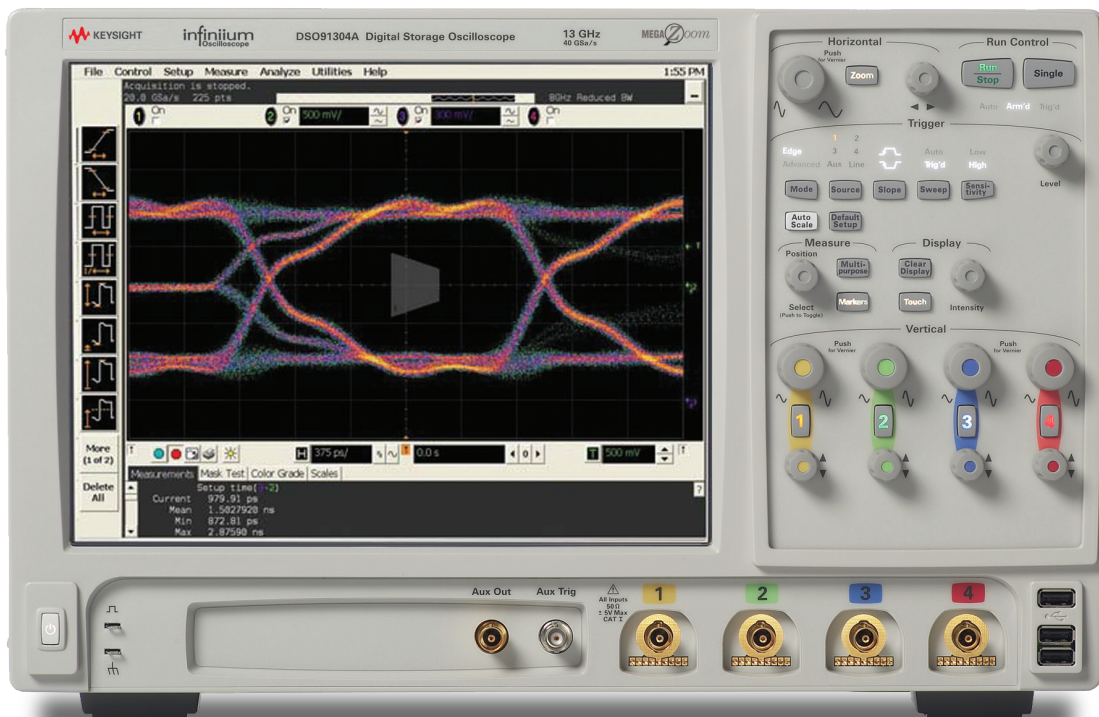


# Keysight U7233A

## DDR1 Compliance Test Application with LPDDR and mobile-DDR Support For Infiniium Series Oscilloscopes

Data Sheet



Unlocking Measurement Insights

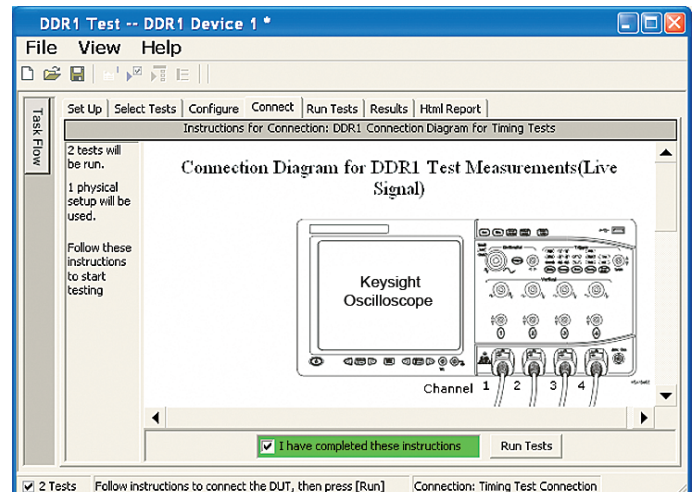
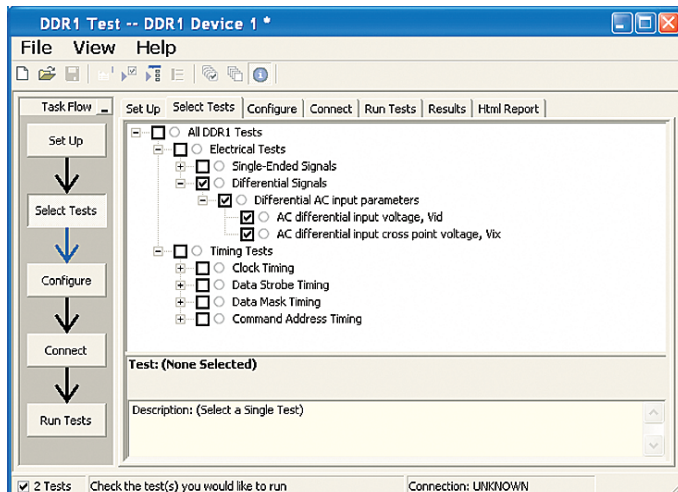
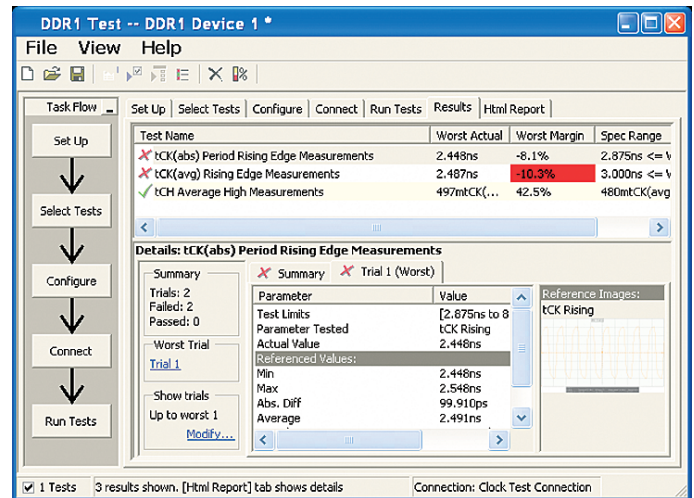
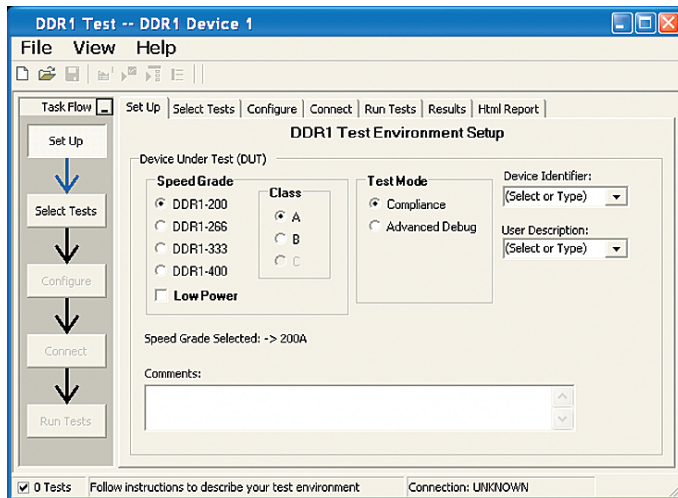
## Test, Debug and Characterize your DDR1 Designs Quickly and Easily

The Keysight Technologies, Inc. DDR1 compliance test application provides a fast and easy way to test, debug and characterize your DDR1 designs. The tests performed by the software are based on the JEDEC<sup>1</sup> JESD79E Double Data Rate (DDR) SDRAM Specification and JESD209A Low Power Double Data Rate (LPDDR) SDRAM Specification. In addition, the application features Advanced Debug mode, which provides testing for embedded memory interfaces that do not operate according to the speeds specified by JEDEC. The test application offers a user-friendly setup wizard and a comprehensive report that includes margin analysis.

DDR1 is the first generation of a new breed of memory technology where data is transferred on both the rising and falling clock edges. DDR1 offers a significant performance advantage compared to previous memory technologies that were based on single data rates. As DDR1 manufacturing has matured, product costs have been driven down significantly, which has fueled growth, especially in the consumer product segment. DDR1 comes in two different packages, a fine ball-grid array (FBGA) package and a thin small-outline package (TSOP).

Signal integrity is crucial for memory system interoperability. Compliance to the JEDEC specification is the key to reliable and interoperable modular memory systems. Besides that, it ensures the memory system functions correctly and stays error free.

The U2733A DDR1 compliance test application is compatible with Keysight 9000 and 90000 Series Infiniium oscilloscopes.



1. The JEDEC (Joint Electronic Device Engineering Council) Solid State Technology Association is a semiconductor engineering standardization body of the Electronic Industries Alliance (EIA), a trade association that represents all areas of the electronic industry.

## Features

The DDR1 compliance test application offers several features to simplify the validation of your DDR1 designs:

- New setup wizard for quick setup, configuration and test
- Compliance testing of clock, electrical and timing measurements in accordance with the JEDEC JESD79E and JESD209A specifications
- Comprehensive analysis that automates the complex measurements, even when you are not there
- Unique read and write separation techniques with InfiniiScan “Zone Qualify” feature
- Ability to separate and analyze the loading due to adjacent rank of the same memory channel
- Automatically perform derating table calculations for setup and hold time measurements based on slew rate

## Comprehensive Test Coverage

With the DDR1 compliance test application, you can use the same oscilloscope you use for everyday debugging to perform automated testing and margin analysis based on the JEDEC electrical and timing specifications. The application automatically configures the oscilloscope for each test and provides informative results. It includes margin analysis indicating how close your device comes to passing or failing the test for each specification.

Some of the difficulties in performing DDR1 tests are connecting to the target device, configuring the oscilloscope, performing the tests and analyzing the measured results. The DDR1 compliance test application does most of this work for you.

## Easy Test Definition

The test application enhances the usability of Keysight Infiniium oscilloscopes for testing DDR1 devices. The Keysight automated test framework guides you quickly through the steps required to define the setup, perform the tests and view the test results. On the environmental setup page, you can select the type of DDR1 devices, and the framework automatically filters the tests based on your selection. You can then select a category of tests or specify individual tests. The user interface is designed to minimize unnecessary reconnections, which saves time and minimizes potential operator error. You can save the tests and configurations as project files and recall them later for quick testing and review of previous results. Clear menus let you perform tests with a minimum of mouse clicks.

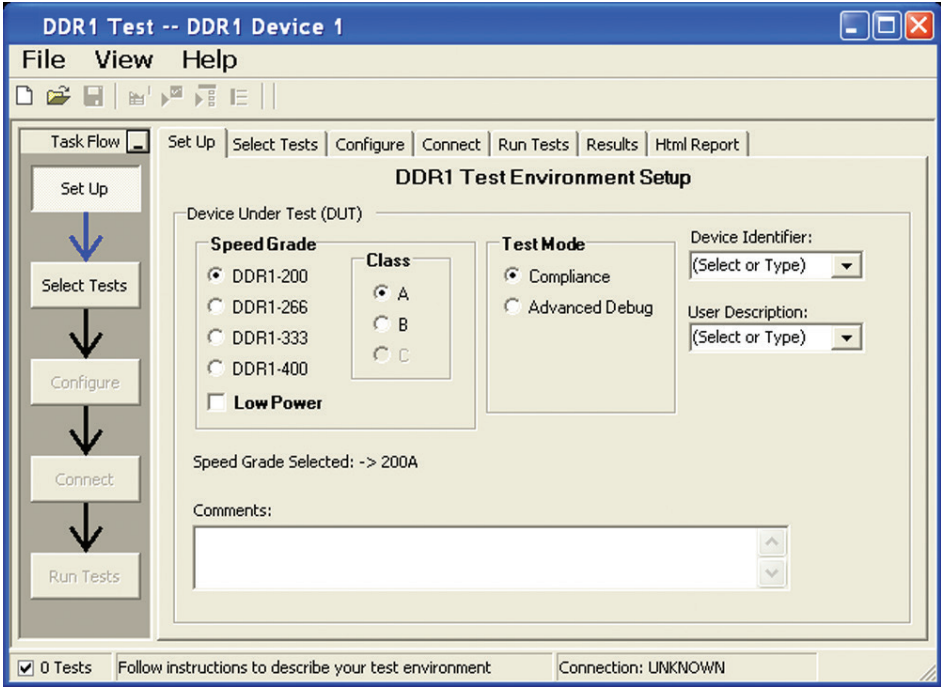


Figure 1. DDR1 application test setup screen. Select Compliance or Advanced Debug test mode and the speed grade of your device.

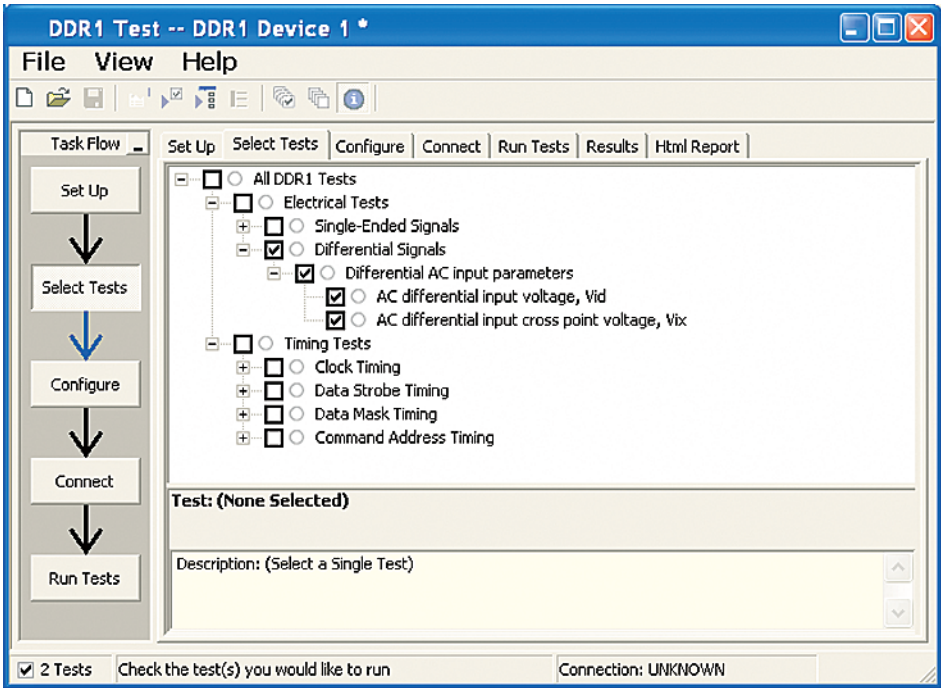


Figure 2. The Keysight automated test engine filters the test selection based on your test setup. You can easily select individual tests or groups of tests with a mouse-click.

## Configurability and Guided Connection

The DDR1 compliance test application provides flexibility in your test setup. The application lets you define controls for critical test parameters such as voltage threshold values, number of waveforms used for analysis and customizable violation settings. Once you have configured the tests, the connection page will display the connection diagram for the test you have selected.

With the multiple test trial capability, you can extensively characterize the performance of your DDR1 devices. You can run the selected tests until the stop condition is met. The application will then save the worst-case conditions and help you track down the anomalies in your signals.

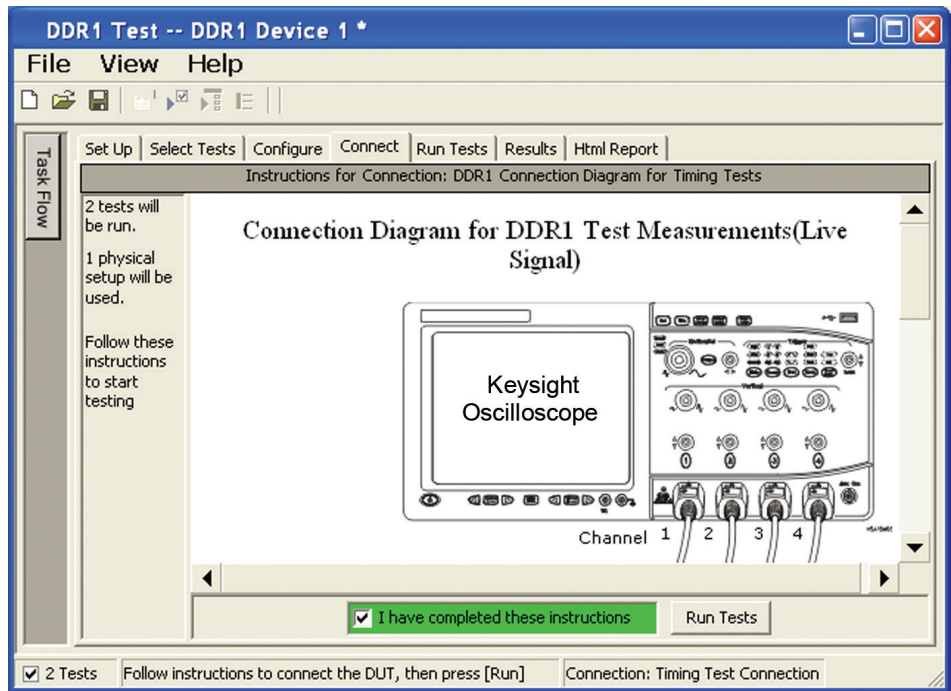


Figure 3. The software prompts you with the connection diagrams for the tests you have selected.

## Comprehensive Results Analysis

In addition to providing you with measurement results, the DDR1 compliance test application reports how close you are to the specified limit. You can specify the level at which warnings are to be issued. You are provided with a full array of statistics for each measurement, and you can save worst-case conditions to extensively test the performance of your device.

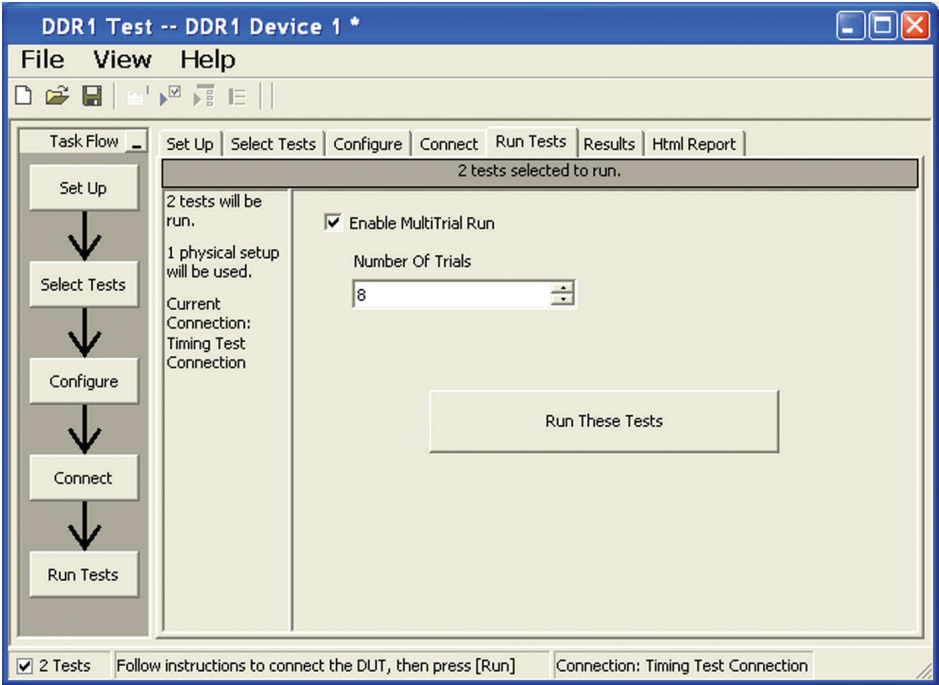


Figure 4. The Repetitive Run feature allows you to run the selected tests until the stop condition is met. It allows you to extensively test the performance of your device.

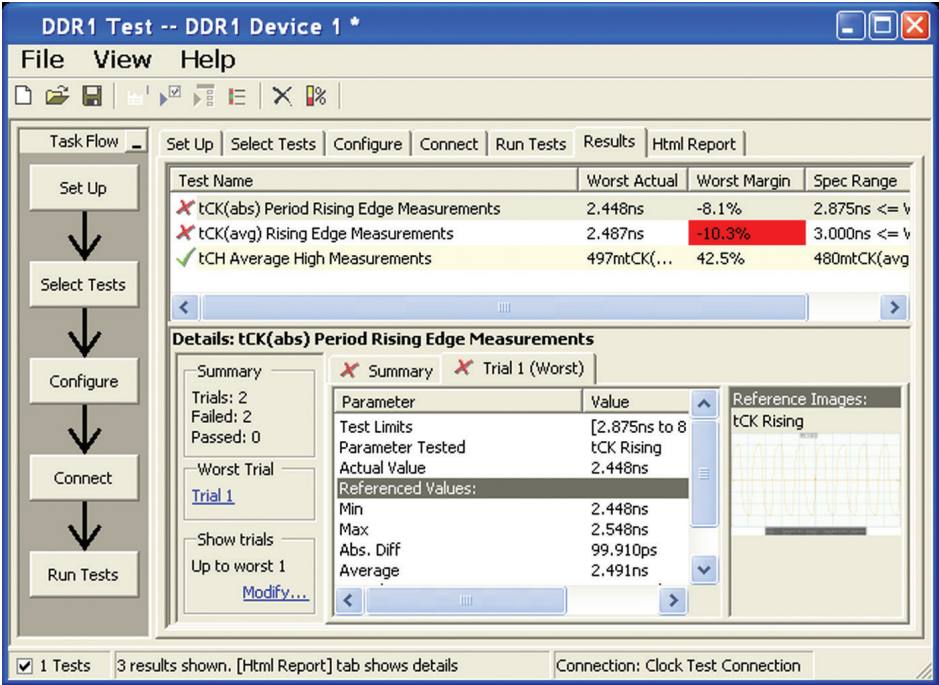


Figure 5. The DDR1 test application documents your test parameters, pass or fail status, test specification range, measured values and the pass/fail margin.

## Thorough Performance Reporting

The DDR1 compliance test application generates thorough HTML reports that capture the performance, status and margins of your device. It also captures screen shots of critical measurements for your reference and documentation. This report is suitable for printing and sharing with your vendors, customers or colleagues.

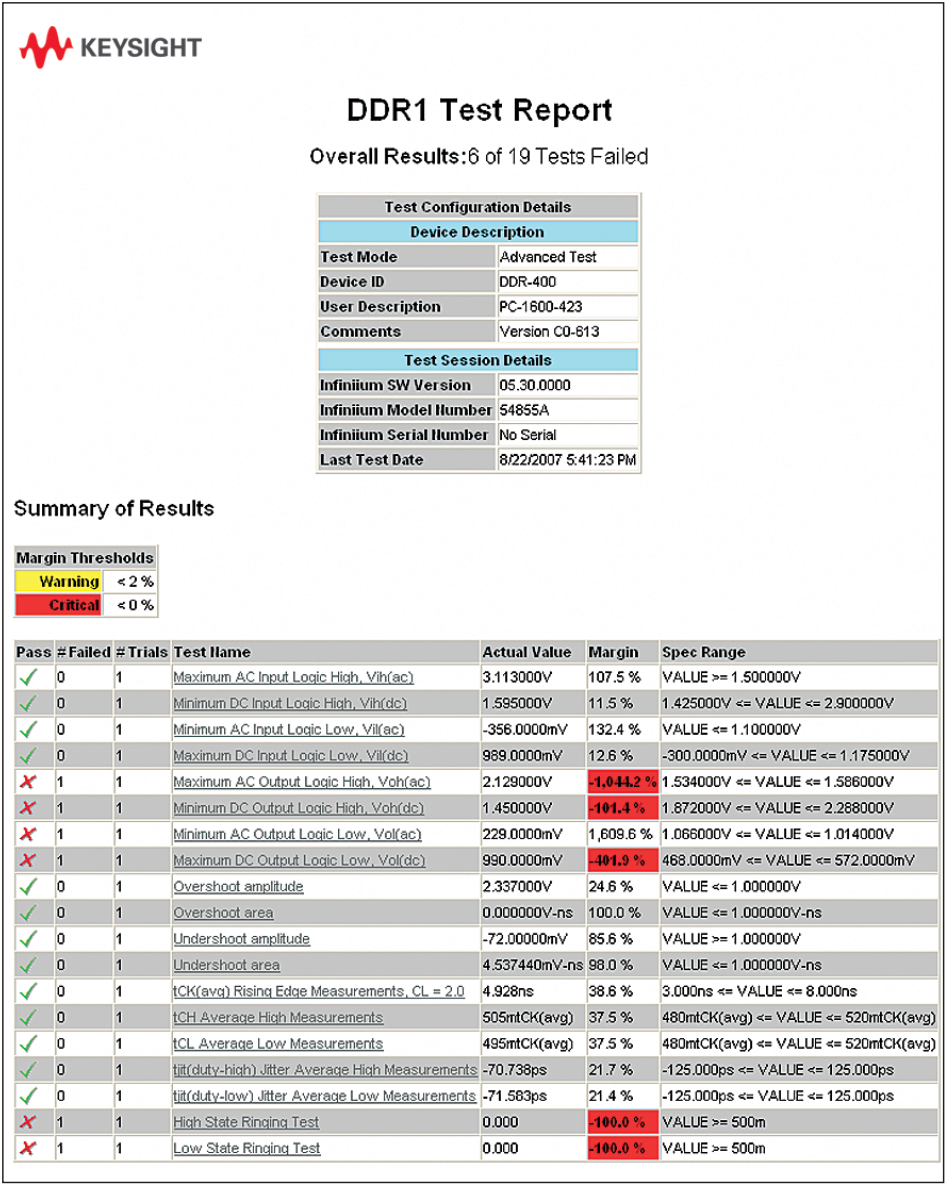


Figure 6. The DDR1 test application generates a summary report where you can see your device's test results quickly and clearly. Details are available for each test including the test limits, test description and test results, including saved waveforms. In addition, the pass/fail margin is indicated to give you further insight.

## Extensibility

You may add additional custom tests or steps to your application using the User Defined Application (UDA) development tool ([www.keysight.com/find/uda](http://www.keysight.com/find/uda)). Use UDA to develop functional “Add-Ins” that you can plug into your application.:

Add-ins may be designed as:

- Complete custom tests (with configuration variables and connection prompts)
- Any custom steps such as pre or post processing scripts, external instrument control and your own device control

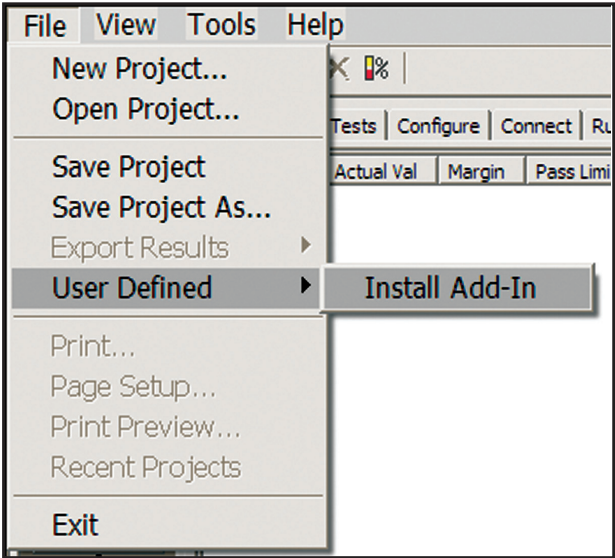


Figure 7. Importing a UDA Add-In into your test application.

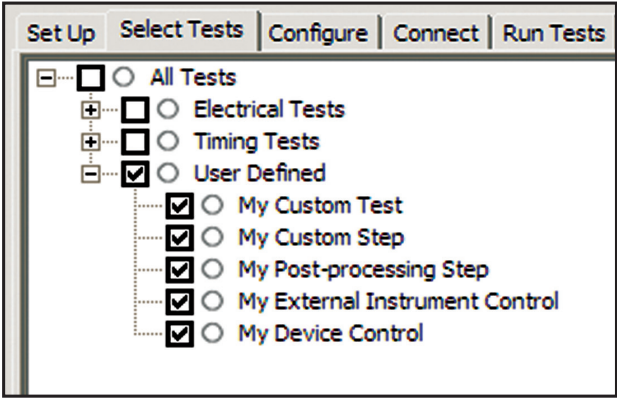


Figure 8. UDA Add-In tests and utilities in your test application.

## Automation

You can completely automate execution of your application's tests and Add-Ins from a separate PC using the included N5452A Remote Interface feature (download free toolkit from [www.keysight.com/find/scope-apps-sw](http://www.keysight.com/find/scope-apps-sw)). You can even create and execute automation scripts right inside the application using a convenient built-in client.

The commands required for each task may be created using a command wizard or from "remote hints" accessible throughout the user interface.

Using automation, you can accelerate complex testing scenarios and even automate manual tasks such as:

- Opening projects, executing tests and saving results
- Executing tests repeatedly while changing configurations
- Sending commands to external instruments
- Executing tests out of order

Combine the power of built-in automation and extensibility to transform your application into a complete test suite executive:

- Interact with your device controller to place it into desired states or test modes before test execution.
- Configure additional instruments used in your test suite such as a pattern generator and probe switch matrix.
- Export data generated by your tests and post-process it using your favorite environment, such as MATLAB, Python, LabVIEW, C, C++, Visual Basic etc.
- Sequence or repeat the tests and "Add-In" custom steps execution in any order for complete test coverage of the test plan.

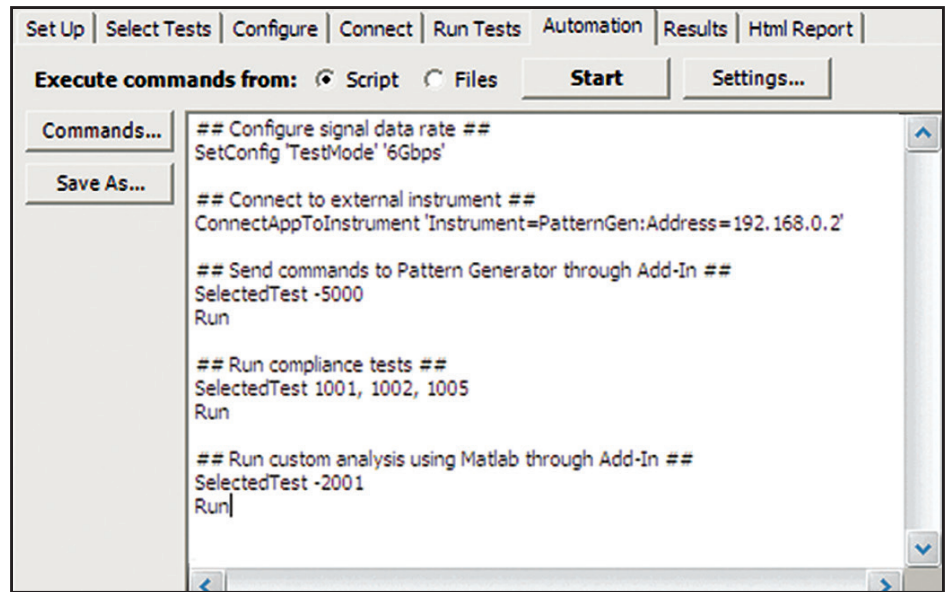


Figure 9. Remote Programming script in the Automation tab.

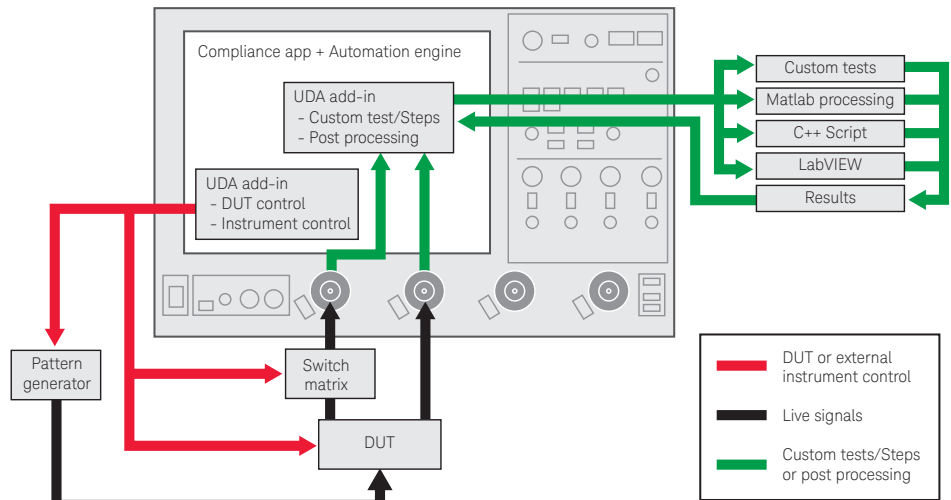


Figure 10. Combine the power of built-in automation and extensibility to transform your application into a complete test suite executive.

## System Device Requirements

In order to speed your test time, you must use the appropriate RAM test reliability software with the memory system to generate random activity on the memory bus. Memtest, is commonly used RAM reliability test software that can run on DOS, Windows and Linux systems.

### Test performed

The Keysight DDR1 compliance test application covers clock, electrical and timing parameters of the JEDEC JESD79E DDR SDRAM Specifications and JESD209A Low Power Double Data Rate (LPDDR) SDRAM Specifications. The application helps you test all DDR1 devices for compliance, using a Keysight 9000 or 90000 Series Infiniium oscilloscope.

In addition, the test application's Advanced Debug feature provides popular test methodologies that are not covered in any specification. These tests help users who want to perform extensive validation beyond the test specification. It also sets up the scope to isolate the read and write signals so you can immediately jump in to debug the signals.

Table 1. JEDEC tests covered by the U7233A test application

Specification	Speed supported			
	DDR-200	DDR-266	DDR-333	DDR-400
<b>AC and DC input measurement levels</b>				
Table 6 (JESD79E) – AC Electrical Characteristics and DC Operating Conditions (page 51)	x	x	x	x
Table 7 (JESD79E) – AC Operating Conditions (page 52)	x	x	x	x
Table 8 (JESD79E) – Low Power DDR SDRAM Electrical Characteristics (page 52)	x	x	x	x
Table 13 (JESD79E) – Input Slew Rate for DQ, DQS and DM (page 60)	x	x	x	x
Table 15 (JESD209A) – Output Slew Rate Characteristics (page 63)	x	x	x	x
Table 16 (JESD209) – AC Overshoot/Undershoot Specification (page 63)	x	x	x	x
Table 20 (JESD79E) – AC Overshoot/Undershoot Specification for Address and Control Pins (page 61)	x	x	x	x
Table 21 (JESD79E) – Overshoot/Undershoot Specification for Data, Strobe, and Mask Pins (page 61)	x	x	x	x
<b>Electrical characteristics and AC timing</b>				
Table 11 (JESD79E) – Electrical Characteristics and AC Timing Part A: DDR333, DDR266, DDR200 Devices (page 56)	x	x	x	
Table 11 (JESD79E) – Electrical Characteristics and AC Timing Part B: DDR400A, DDR400B, DDR400C (page 57)				x
Table 12 (JESD79E) – AC Timing Variations for DDR333, DDR266 and DDR200 Devices (page 58)	x	x	x	
Table 14 (JESD209A) – AC Timing Variations for LPDDR Devices (page 59)	x	x		

Table 2. Advanced Debug feature covered by the U7233A test application

Measurement items	Speed supported
All JEDEC tests from compliance mode	User configurable
High/low state ringing test	User configurable

## Recommended Oscilloscopes

The DDR1 and LPDDR1 compliance software is compatible with Keysight Infiniium Series oscilloscopes with operating software revision 4.20 or higher. For oscilloscopes with earlier revisions, free upgrade software is available here: [www.keysight.com/find/scope-apps-sw](http://www.keysight.com/find/scope-apps-sw).

Data rate	Minimum bandwidth	Minimum channels	Compatible oscilloscopes
Up to 400 MT/s	2 GHz	3	Infiniium 9000, 90000, S-Series and Z-Series

## Ordering Information

To purchase the DDR1 compliance test application, order the following:

## Software Options

Application	License type		Infiniium Z-Series	Infiniium S-Series	Infiniium 90000 Series	Infiniium 9000 Series
DDR1 and LPDDR1 compliance	Fixed	Factory-installed	U7233A-1FP	U7238B-1FP	Option 031	Option 031
		User-installed	U7233A-1FP	U7233A-1FP	U7233A-1NL	U7233A-1NL
	Floating	Transportable	U7233A-1TP	U7233B-1TP	U7233A-1TP <sup>1,2</sup>	U7233B-1TP <sup>1,2</sup>
		Server-based	N5435A-021			
DDR compliance software bundle	Fixed	Factory-installed	N5459B-1FP	N5459C-1FP	–	–
		User-installed	N5459B-1FP	N5459C-1FP	N5459B-1NL	N5459C-1NL
	Floating	Transportable	–	–	–	–
		Server-based	–			
Serial data analysis software (included in DSA model)	Fixed	Factory-installed	E2688A-1FP	N5384A-1FP	Option 003	Option 003
		User-installed	E2688A-1FP	N5384A-1FP	E2688A-1NL	N5384A-1NL
	Floating	Transportable	E2688A-1TP	N5384A-1TP	E2688A-1TP <sup>1,2</sup>	N5384A-1TP <sup>1,2</sup>
		Server-based	N5435A-003			
InfiniiScan	Fixed	Factory-installed	N5414B-1FP	N5415B-1FP	Option 009	Option 009
		User-installed	N5414B-1FP	N5415B-1FP	N5414B-1FP	N5415B-1NL
	Floating	Transportable	N5414B-1TP	N5415B-1TP	N5414B-1TP <sup>1,2</sup>	N5415B-1TP <sup>1,2</sup>
		Server-based	N5435A-004			

1. Requires software 5.00 and above.

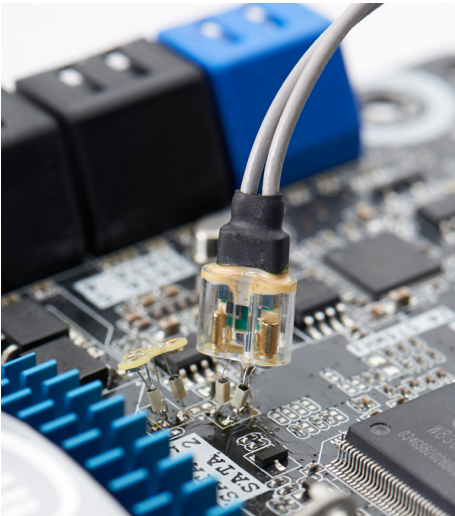
2. Software 4.30 or above requires Windows 7. N2753A Infiniium Windows XP to 7 OS upgrade kit (oscilloscope already has M890 motherboard). N2754A Infiniium Windows XP to 7 OS and M890 motherboard upgrade kit (oscilloscope without M890 motherboard). Verify the M890 motherboard using the procedure found in the Windows 7 upgrade kit data sheet, publication number 5990-8569EN.

## Ordering Information (Continued)

### Probe accessories

#### InfiniiMax probe amplifiers

Model number	Description
1169A	12-GHz differential probe amplifier
1168A	10-GHz differential probe amplifier
1134A	7-GHz differential probe amplifier
1132A	5-GHz differential probe amplifier
1131A	3.5-GHz differential probe amplifier
1130A	1.5-GHz differential probe amplifier
N2831A	8-GHz InfiniiMax III+ probe amplifier
N2832A	12-GHz InfiniiMax III+ probe amplifier



Use InfiniiMax III+ probe amplifier with QuickTip head for quick and secure connection.

#### InfiniiMax probe heads

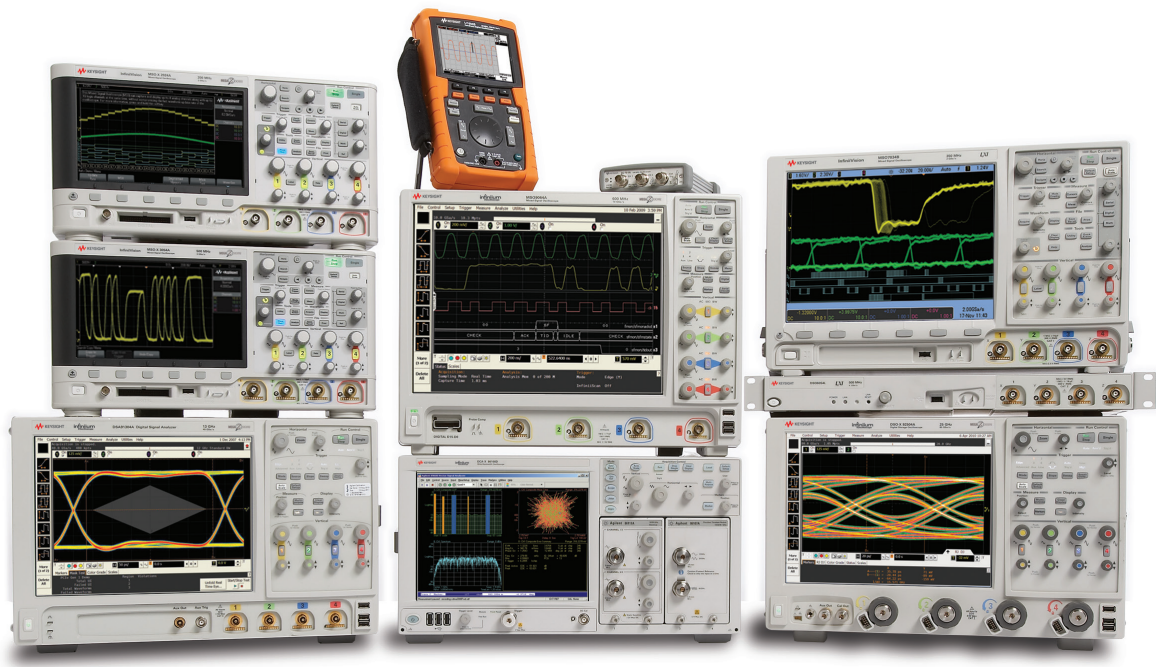
Model number	Description
N5381A	InfiniiMax II 12-GHz differential solder-in probe head and accessories
N5382A	InfiniiMax II 12-GHz differential browser
E2677A	InfiniiMax 12-GHz differential solder-in probe head and accessories
E2675A	InfiniiMax 6-GHz differential browser probe head and accessories
N5425A	InfiniiMax 12-GHz ZIF probe head
N5426A	ZIF tips (x10)
N5451A	Long Wire ZIF tips (x10)
N2848A	InfiniiMax III QuickTip head
N2849A	InfiniiMax III QuickTip tips (4 per kit)
E2678A	InfiniiMax 12-GHz differential socketed probe head and accessories
E261xA/B	Wedge Adapters to work with E2678A for probing DDR1 TSOP (3 to 8 signals)
E264xA	Wedge Adapters to work with E2678A for probing DDR1 TSOP (16 signals)
W2637A	x16 LPDDR BGA probes for oscilloscopes and logic analyzers
W2638A	x32 LPDDR BGA probes for oscilloscopes and logic analyzers
W2639A	LPDDR scope probe adapter

## Related Literature

Publication title	Publication number
<i>Infiniium Oscilloscope Probes and Accessories - Data Sheet</i>	5968-7141EN
<i>E2688A, N5384A High-Speed Serial Data Analysis and Clock Recovery Software - Data Sheet</i>	5989-0108EN
<i>EZJIT Plus Jitter Analysis Software for Infiniium Oscilloscopes - Data Sheet</i>	5989-0109EN
<i>A Time-Saving Method for Analyzing Signal Integrity in DDR Memory Buses - Application Note</i>	5989-6664EN
<i>Infiniium 90000 Series Oscilloscopes - Data Sheet</i>	5989-7819EN
<i>W2637A, W2638A and W2639A LPDDR BGA Probes for Logic Analyzers and Oscilloscopes - Data Sheet</i>	5990-3892EN

## Product Web site

For the most up-to-date and complete application and product information, please visit our product Web site at: [www.keysight.com/find/u7233a](http://www.keysight.com/find/u7233a)



## Keysight Oscilloscopes

Multiple form factors from 20 MHz to > 90 GHz | Industry leading specs | Powerful applications



**[www.axiestandard.org](http://www.axiestandard.org)**

AdvancedTCA® Extensions for Instrumentation and Test (AXIe) is an open standard that extends the AdvancedTCA for general purpose and semiconductor test. Keysight is a founding member of the AXIe consortium. ATCA®, AdvancedTCA®, and the ATCA logo are registered US trademarks of the PCI Industrial Computer Manufacturers Group.



**[www.lxistandard.org](http://www.lxistandard.org)**

LAN eXtensions for Instruments puts the power of Ethernet and the Web inside your test systems. Keysight is a founding member of the LXI consortium.



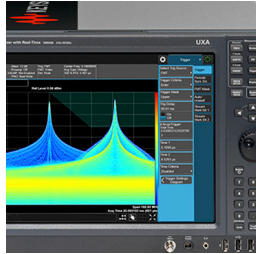
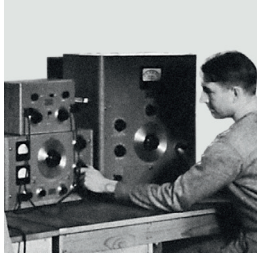
**[www.pxisa.org](http://www.pxisa.org)**

PCI eXtensions for Instrumentation (PXI) modular instrumentation delivers a rugged, PC-based high-performance measurement and automation system.

## Evolving Since 1939

Our unique combination of hardware, software, services, and people can help you reach your next breakthrough. We are unlocking the future of technology.

From Hewlett-Packard to Agilent to Keysight.



**myKeysight**

**myKeysight**

[www.keysight.com/find/mykeysight](http://www.keysight.com/find/mykeysight)

A personalized view into the information most relevant to you.

[www.keysight.com/find/emt\\_product\\_registration](http://www.keysight.com/find/emt_product_registration)

Register your products to get up-to-date product information and find warranty information.

**KEYSIGHT SERVICES**  
Accelerate Technology Adoption.  
Lower costs.

**Keysight Services**

[www.keysight.com/find/service](http://www.keysight.com/find/service)

Keysight Services can help from acquisition to renewal across your instrument's lifecycle. Our comprehensive service offerings—one-stop calibration, repair, asset management, technology refresh, consulting, training and more—helps you improve product quality and lower costs.



**Keysight Assurance Plans**

[www.keysight.com/find/AssurancePlans](http://www.keysight.com/find/AssurancePlans)

Up to ten years of protection and no budgetary surprises to ensure your instruments are operating to specification, so you can rely on accurate measurements.

**Keysight Channel Partners**

[www.keysight.com/find/channelpartners](http://www.keysight.com/find/channelpartners)

Get the best of both worlds: Keysight's measurement expertise and product breadth, combined with channel partner convenience.

[www.keysight.com/find/u7233a](http://www.keysight.com/find/u7233a)

For more information on Keysight Technologies' products, applications or services, please contact your local Keysight office. The complete list is available at:  
[www.keysight.com/find/contactus](http://www.keysight.com/find/contactus)

### Americas

Canada	(877) 894 4414
Brazil	55 11 3351 7010
Mexico	001 800 254 2440
United States	(800) 829 4444

### Asia Pacific

Australia	1 800 629 485
China	800 810 0189
Hong Kong	800 938 693
India	1 800 11 2626
Japan	0120 (421) 345
Korea	080 769 0800
Malaysia	1 800 888 848
Singapore	1 800 375 8100
Taiwan	0800 047 866
Other AP Countries	(65) 6375 8100

### Europe & Middle East

Austria	0800 001122
Belgium	0800 58580
Finland	0800 523252
France	0805 980333
Germany	0800 6270999
Ireland	1800 832700
Israel	1 809 343051
Italy	800 599100
Luxembourg	+32 800 58580
Netherlands	0800 0233200
Russia	8800 5009286
Spain	800 000154
Sweden	0200 882255
Switzerland	0800 805353
	Opt. 1 (DE)
	Opt. 2 (FR)
	Opt. 3 (IT)
United Kingdom	0800 0260637

For other unlisted countries:  
[www.keysight.com/find/contactus](http://www.keysight.com/find/contactus)  
(BP-9-7-17)

**DEKRA Certified**  
ISO 9001 Quality Management System

[www.keysight.com/go/quality](http://www.keysight.com/go/quality)  
Keysight Technologies, Inc.  
DEKRA Certified ISO 9001:2015  
Quality Management System