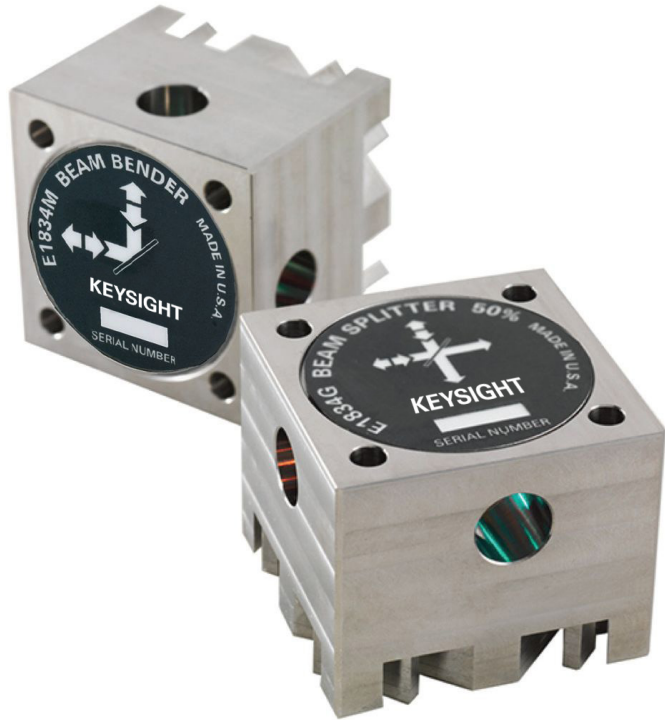


Keysight E1834E, E1834G, E1834J, E1834M, E1834Z Mounted Beam Delivery Optics

The Keysight Technologies, Inc. E1834x is a series of beam delivery optics in high performance mounts that offer the high pointing stability required for transducer systems. They can be used for routing the laser beam throughout the laser interferometer system and are available in a variety of splitting percentages and mounting configurations.



Keysight E1834E/G/J/M/Z Mounted Beam Delivery Optics.

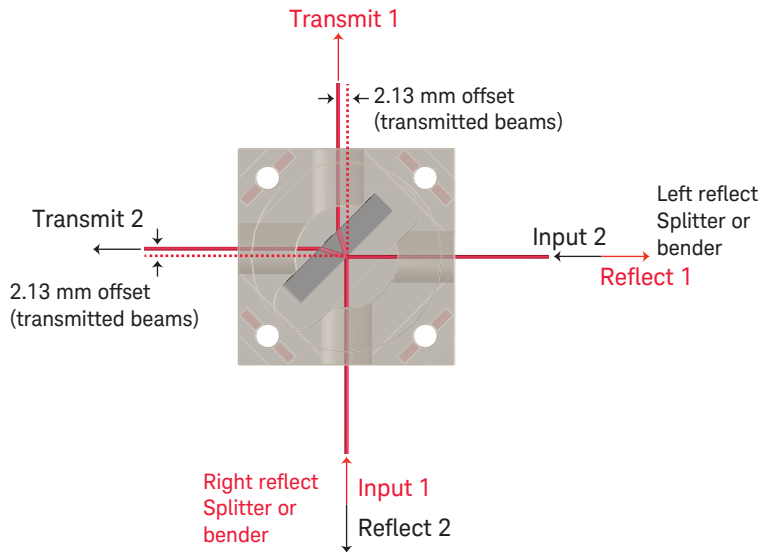
Key features

- 4 beam splitting percentages and 2 mounting configurations
- 8 flexure feet designed for 6 °C range
- 416 stainless steel housing for low CTE
- 11 mm clear aperture for up to 9 mm diameter laser beam
- Excellent reflected beam pointing accuracy relative to machined datums

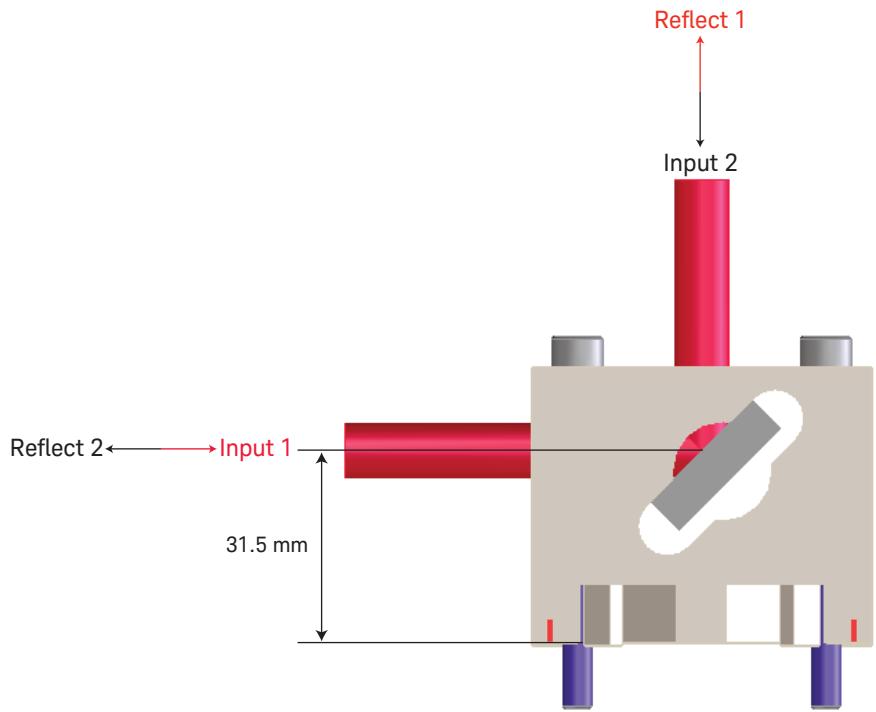
Product specifications

Model	Splitter reflective %	Optical efficiency	Mount configuration	
E1834E	33%	± 5%	Horizontal	– Reflected beam pointing accuracy
E1834G	50%	± 5%	Horizontal	– Pitch: ≤ 2.0 mradians
E1834J	67%	± 5%	Horizontal	– Yaw: ≤ 1.5 mradians
E1834M	100%	± 5%	Horizontal	– Beam height: 31.5 mm
E1834Z	100%	± 5%	Vertical	– L x W x H: 55 mm x 55 mm x 45 mm

Horizontal mount beam pattern



Vertical mount beam pattern



For more details on Keysight interferometry systems, components and ordering information please visit www.keysight.com/find/lasers

KEYSIGHT SERVICES

Accelerate Technology Adoption. Lower costs.

www.keysight.com/find/services

Keysight Services helps you improve productivity and product quality with our comprehensive service offerings of one-stop calibration, repair, asset management, technology refresh, consulting, training, and more.