

Keysight N8830A

100GBASE-CR4 Electrical Performance Validation and Conformance Software

For Infiniium Oscilloscopes

Data Sheet

Introduction

Features

The N8830A 100GBASE-CR4 Ethernet electrical test software offers several features to simplify the validation of Ethernet designs:

- Setup wizard for quick and clear setup, configuration, and test
- Wide range of 100GBASE-CR4 Ethernet electrical tests enabling standards conformance
- Accurate and repeatable results with Keysight Technologies Infiniium oscilloscopes
- Automated reporting in a comprehensive HTML format with margin analysis

With the 100GBASE-CR4 Ethernet electrical test software, you can use the same oscilloscope you use for everyday debugging to perform automated testing and margin analysis based on the IEEE P802.3bj standard.

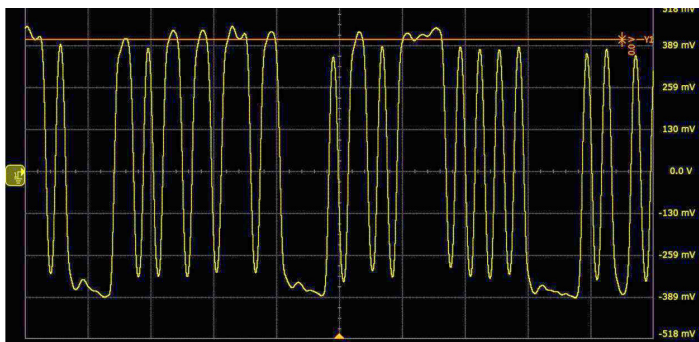


Table of Contents

Easy and Accurate 100GBASE-CR4 Ethernet Transmitter Design Validation and Debug	03
100GBASE-CR4 Compliance Application Software Saves You Time	04
Configurability and Guided Connections	06
Switch Matrix – Support for Multi-Lane Channels.....	09
N8830A 100GBASE-CR4 Ethernet Compliance Tests	10
Measurement Requirements	10
Ordering Information	11
Related Literature	11
Evolving Since 1939.....	13

Easy and Accurate 100GBASE-CR4 Ethernet Transmitter Design Validation and Debug

The N8830A 100GBASE-CR4 Ethernet electrical performance validation and conformance software for Infiniium oscilloscopes gives you an easy and accurate way to verify and debug your 100GBASE-CR4 Ethernet designs. The Ethernet electrical test software allows you to automatically execute Ethernet physical-layer (PHY) electrical tests, and it displays the results in a flexible report format. In addition to the measurement data, the report provides a margin analysis that shows how closely your device passed or failed each test.

The N8830A 100GBASE-CR4 Ethernet compliance software performs a wide range of electrical tests required to meet the IEEE P802.3bj Ethernet electrical specifications. To meet signal quality requirements, your product must successfully pass conformance testing based on these specifications. Performing these tests gives you confidence in your design. The software helps you execute a wide subset of the conformance tests that can be measured with an oscilloscope.



100GBASE-CR4 Compliance Application Software Saves You Time

The 100GBASE-CR4 Ethernet electrical test software saves you time by setting the stage for automatic execution of 100GBASE-CR4 electrical tests. Part of the difficulty of performing electrical tests for Ethernet transmitters is properly connecting to the oscilloscope, loading the proper setup files, and then analyzing the measured results by comparing them to limits published in the specification. The Ethernet electrical test software does much of this work for you. The 100GBASE-CR4 Ethernet electrical test software automatically configures the oscilloscope for each test, and it provides an informative results report that includes margin analysis indicating how close your product is to passing or failing that specification.

See Table 2 for a complete list of the measurements made by the 100GBASE-CR4 Ethernet electrical test software.

Easy test definition

The 100GBASE-CR4 Ethernet electrical test software extends the ease-of-use advantages of the Keysight Technologies, Inc. Infiniium oscilloscopes to testing 100GBASE-CR4 designs. The Keysight automated test engine walks you quickly through the steps required to define the tests you want to make, set up the tests, perform the tests, and view the test results. A setup page enables you to quickly make decisions from the outset regarding the choice of tests and perform functions that affect the testing task. The test selections available in the following steps are then filtered according to the choices made in the setup page. While selecting tests, you can select a category of tests all at once or specify individual tests. You can save tests and configurations as project files and recall them later for quick testing and review of previous test results. Straightforward menus let you perform tests with a minimum number of mouse clicks.

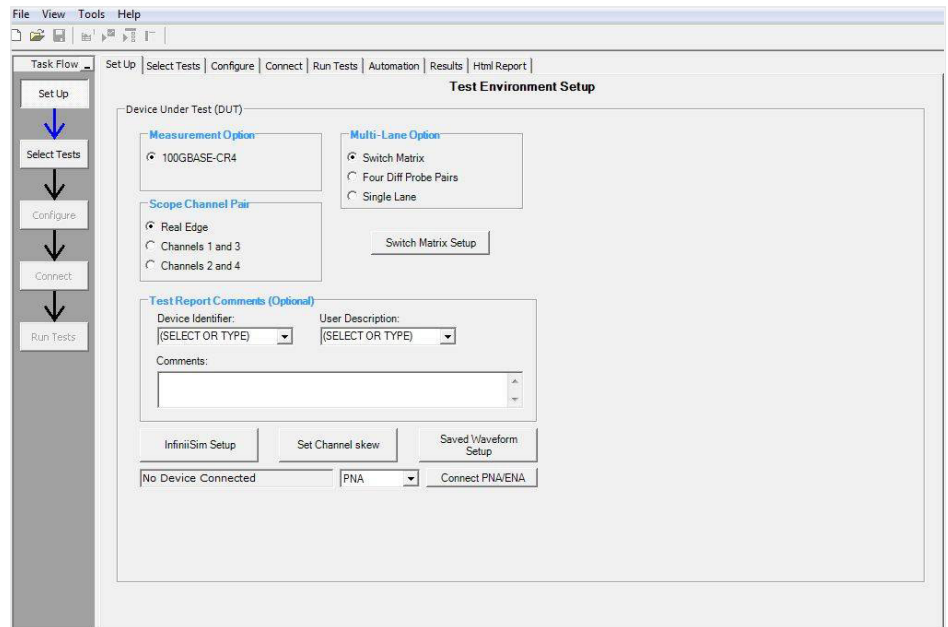


Figure 1. The clean interface allows you select 100GBASE-CR4 test categories and test limits found in the IEEE P802.3bj specification.



View all of the 100GBASE-CR4 Ethernet electrical tests in the GUI under selected tests

- Setup wizard for quick and clear setup, configuration, and test.
- See clearly all the 100GBASE-CR4 Ethernet electrical tests.
- Run single or multiple tests based on your needs.
- When a test is highlighted, it will show the description of the test along with pass limits.
- Accurate and repeatable results with Keysight Infiniium oscilloscopes.
- Automated reporting in a comprehensive HTML format with margin analysis.

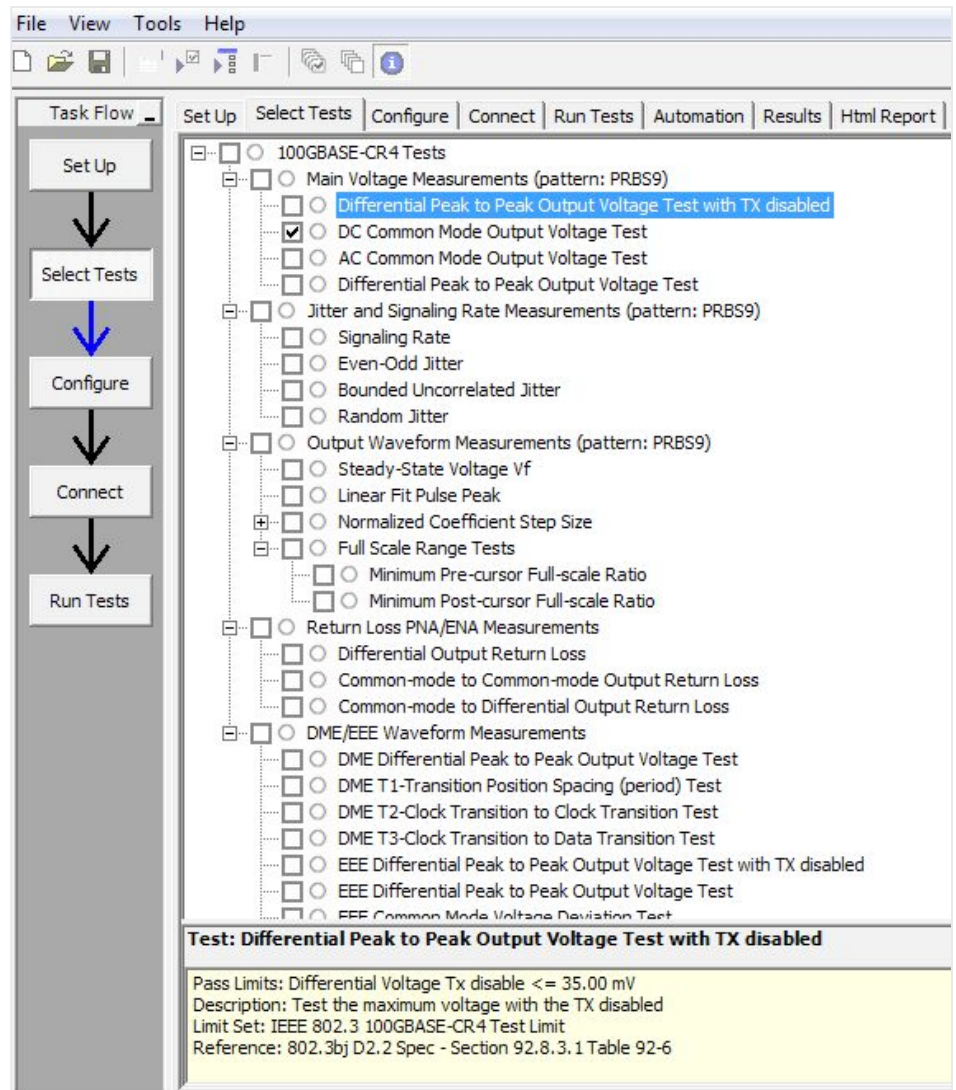


Figure 2. The Keysight automated test engine guides you quickly through selecting and configuring tests, setting up the connection, running the tests, and viewing the results. You can easily select individual tests or groups of tests with a mouse click.



Configurability and Guided Connections

The N8830A 100GBASE-CR4 Ethernet electrical test software gives you flexibility in your test setup. It guides you to make connection changes with hookup diagrams when the tests you select require it. SMA cables or probes may be required to connect the device under test to the Keysight Infiniium oscilloscope. See ordering information for more details.

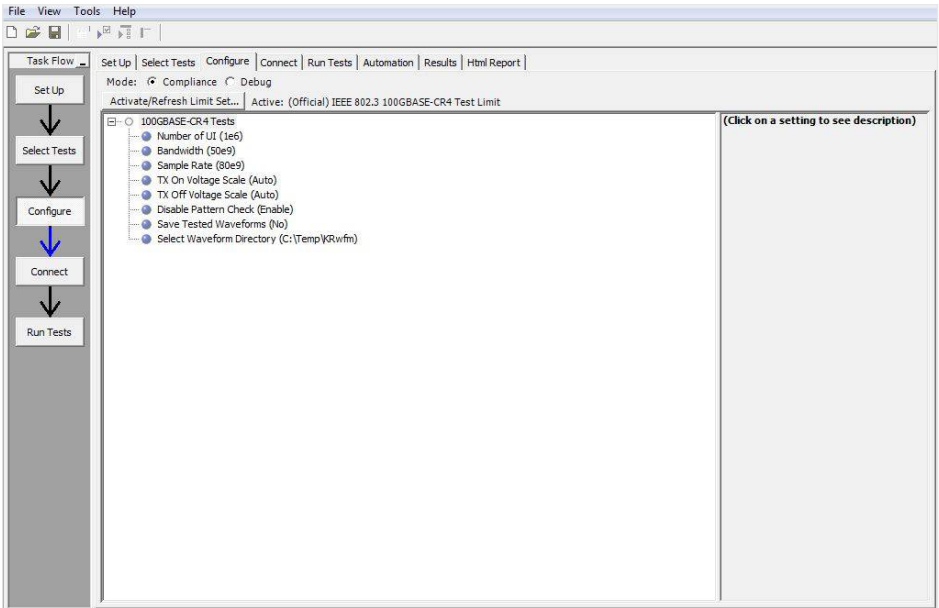


Figure 3. To set up tests, you define the device to test, its configuration, and how the oscilloscope is connected to it.

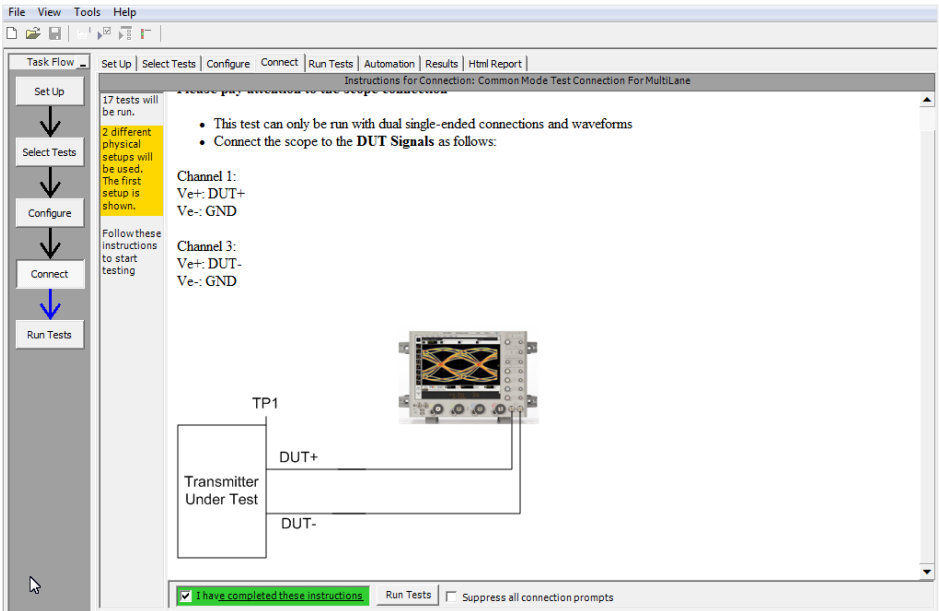


Figure 4. When you make multiple tests where the connections must be changed, the software prompts you with connection diagrams.



Configurability and Guided Connections (Continued)

In addition to providing you with measurement results, the 100GBASE-CR4 Ethernet electrical test software provides a report format that shows you not only where your product passes or fails, but also reports how close you are to the limits specified for a particular test. You can select the margin test report parameter, which means you can specify the level at which warnings are issued to alert you to electrical tests where your product is operating close to the official test limit defined by the 100GBASE-CR4 specification.

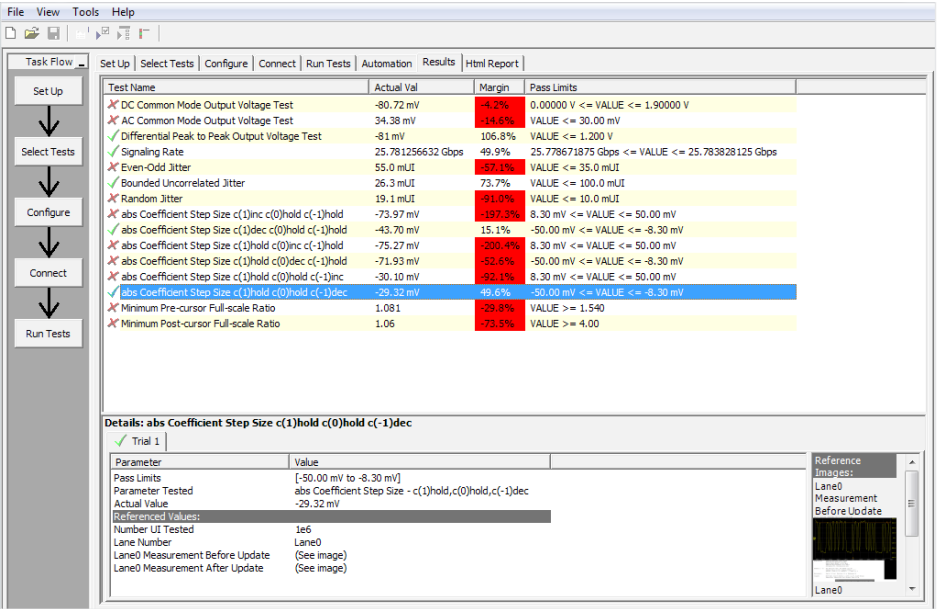


Figure 5. The 100GBASE-CR4 Ethernet electrical test software results screen shows a summary of the tests performed, pass/fail status, and margin. Clicking on a specific test also shows the test specification and a measurement waveform, if appropriate.

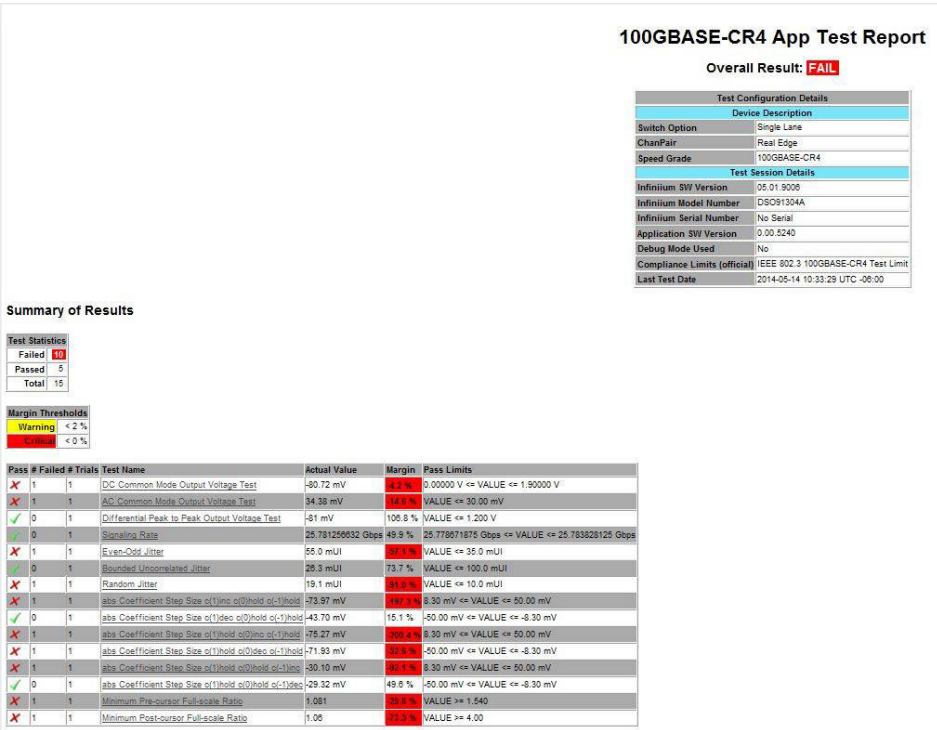


Figure 6. The 100GBASE-CR4 Ethernet electrical test software HTML report documents your test and indicates the pass/fail status, the test specification range, the measured values, and the margin.



Configurability and Guided Connections (Continued)

Reports with margin analysis

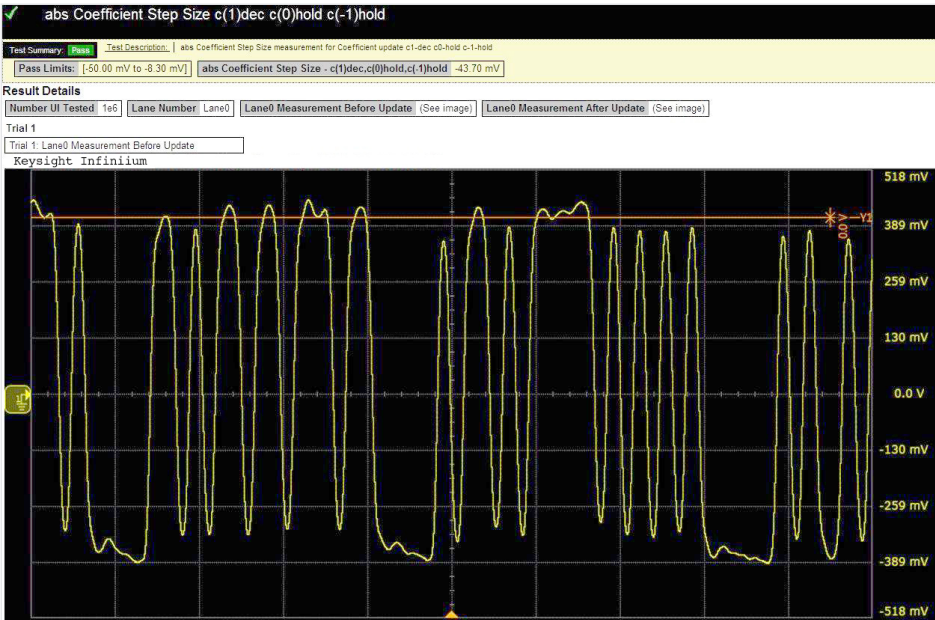


Figure 7. Additional details are available for each test, including the test limits, test description, and test results, including waveforms, if appropriate.

Summary of Results

Test Statistics	
Failed	10
Passed	5
Total	15

Margin Thresholds	
Warning	< 2 %
Critical	< 0 %

Pass	# Failed	# Trials	Test Name	Actual Value	Margin	Pass Limits
✗	1	1	DC Common Mode Output Voltage Test	-80.72 mV	-4.2 %	0.00000 V <= VALUE <= 1.90000 V
✗	1	1	AC Common Mode Output Voltage Test	34.38 mV	-14.6 %	VALUE <= 30.00 mV
✓	0	1	Differential Peak to Peak Output Voltage Test	-81 mV	108.8 %	VALUE <= 1.200 V
✓	0	1	Signaling Rate	25.781258832 Gbps	49.9 %	25.778871875 Gbps <= VALUE <= 25.783828125 Gbps
✗	1	1	Even-Odd Jitter	55.0 mUI	-57.1 %	VALUE <= 35.0 mUI
✓	0	1	Bounded Uncorrelated Jitter	28.3 mUI	73.7 %	VALUE <= 100.0 mUI
✗	1	1	Random Jitter	19.1 mUI	-91.0 %	VALUE <= 10.0 mUI
✗	1	1	abs Coefficient Step Size c(1)inc c(0)hold c(-1)hold	-73.97 mV	-197.3 %	8.30 mV <= VALUE <= 50.00 mV
✓	0	1	abs Coefficient Step Size c(1)dec c(0)hold c(-1)hold	-43.70 mV	15.1 %	-50.00 mV <= VALUE <= -8.30 mV
✗	1	1	abs Coefficient Step Size c(1)hold c(0)inc c(-1)hold	-75.27 mV	-200.4 %	8.30 mV <= VALUE <= 50.00 mV
✗	1	1	abs Coefficient Step Size c(1)hold c(0)dec c(-1)hold	-71.93 mV	-52.6 %	-50.00 mV <= VALUE <= -8.30 mV
✗	1	1	abs Coefficient Step Size c(1)hold c(0)hold c(-1)inc	-30.10 mV	-92.1 %	8.30 mV <= VALUE <= 50.00 mV
✓	0	1	abs Coefficient Step Size c(1)hold c(0)hold c(-1)dec	-29.32 mV	49.6 %	-50.00 mV <= VALUE <= -8.30 mV
✗	1	1	Minimum Pre-cursor Full-scale Ratio	1.081	-28.8 %	VALUE >= 1.540
✗	1	1	Minimum Post-cursor Full-scale Ratio	1.08	-73.5 %	VALUE >= 4.00

Figure 8. How close your device comes to passing or failing a test is indicated as a percentage in the margin field. A result highlighted in yellow or red indicates that your device has tripped the margin threshold level for a warning or failure.



Switch Matrix – Support for Multi-Lane Channels

The Keysight switch matrix software option for the compliance application, used together with switch matrix hardware, enables fully-automated testing for multi-lane digital bus interfaces. The benefits of this automated switching solution include:

- Eliminate reconnections, which saves time and reduces errors through automating test setup for each lane of a multi-lane bus.
- Maintain accuracy with the use of unique N2809A PrecisionProbe or N5465A InfiniiSim features to compensate for switch path losses and skew.
- Customize testing by using remote programming interface and the N5467A user-defined application tool for device control, instrument control, and test customization.

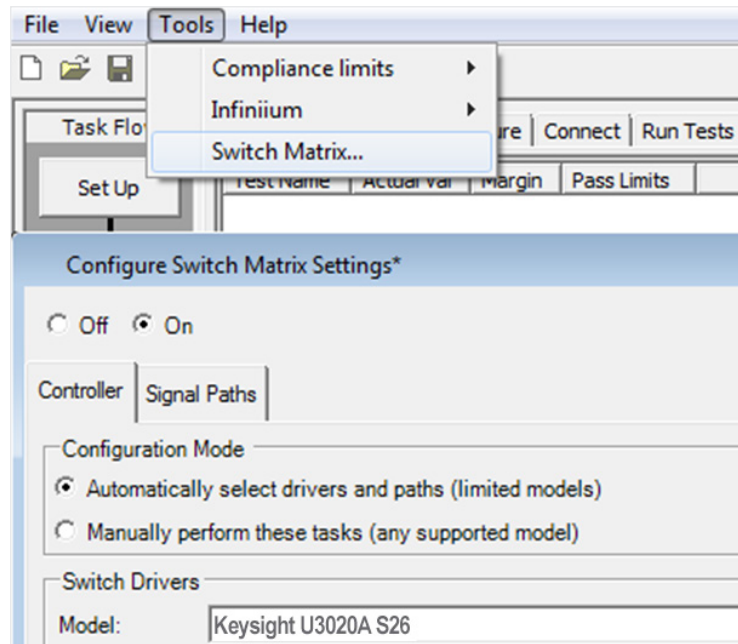


Figure 9. Switch matrix software feature enabled in the compliance application.

Switch matrix hardware

Please contact Keysight for latest switch matrix information.

More information about the switching solution and configuration, visit www.keysight.com/find/switching and the Keysight application note with the publication number 5991-2375EN.



Figure 10. Automated testing for multi-lane digital bus interface through switching solution switch matrix.



N8830A 100GBASE-CR4 Ethernet Compliance Tests

Specification IEEE P802.3bj Clause 92

- Differential peak-to-peak output voltage test with TX disabled
- DC common mode output voltage test
- AC common mode output voltage test
- Differential peak-to-peak output voltage test
- Signaling rate
- Even-odd jitter
- Bounded uncorrelated jitter
- Random jitter
- Steady-state voltage V_f
- Linear fit pulse peak
- Normalized coefficient step size
- Abs coefficient step size $c(1)$ inc $c(0)$ hold $c(-1)$ hold
- Abs coefficient step size $c(1)$ dec $c(0)$ hold $c(-1)$ hold
- Abs coefficient step size $c(1)$ hold $c(0)$ inc $c(-1)$ hold
- Abs coefficient step size $c(1)$ hold $c(0)$ dec $c(-1)$ hold
- Abs coefficient step size $c(1)$ hold $c(0)$ hold $c(-1)$ inc
- Abs coefficient step size $c(1)$ hold $c(0)$ hold $c(-1)$ dec
- Minimum pre-cursor full-scale ratio
- Minimum post-cursor full-scale ratio
- Differential output return loss
- Common-mode to common-mode output return loss
- Common-mode to differential output return loss
- DME differential peak-to-peak output voltage test
- DME T1-transitions position spacing (period) test
- DME T2-clock transition to clock transition test
- DME T3-clock transition to data transition test
- EEE differential peak-to-peak output voltage test with TX disabled
- EEE differential peak-to-peak output voltage test
- EEE common mode voltage deviation test

Measurement Requirements

To use the N8830A Ethernet electrical performance validation and conformance software on your Infiniium oscilloscope, you will need oscilloscope probes, probe heads, and other test accessories depending on the Ethernet standard and test suites you want to perform.



Ordering Information

Recommended oscilloscopes

The 100GBASE-CR4 compliance software is compatible with Keysight Infiniium Series oscilloscopes running Windows 7 with operating software revision 5.02 or higher. For oscilloscopes with earlier revisions, free upgrade software is available here:

www.keysight.com/find/scope-apps-sw.

Standard	Data rate	Minimum bandwidth	Minimum channels	Compatible oscilloscopes
100BASE-CR4	100 Gb/s	63 GHz	2	Infiniium Q-Series

Recommended probes and fixtures

Model number	Description
N2812B (2 required)	Keysight 33 GHz precision cable

Switch matrix

Contact Keysight for the latest switch matrix solution.

Accessories

Model number	Description
85058-60114 (2 required)	Adapter, SMA (f) to SMA (f)

Software options

Application	License type		Infiniium Z-Series	Infiniium Q-Series
100GBASE-CR4	Fixed	Factory-installed	N8830A-1FP	Option 086
		User-installed	N8830A-1FP	N8830A-1NL
	Floating	Transportable	N8830A-1TP	N8830A-1TP ^{1,2}
		Server-based	N5435A-080	
Switch matrix option	Fixed	Factory-installed	N8890A-1FP	Option 097
		User-installed	N8890A-1FP	N8890A-1FP
	Floating	Transportable	N8890A-1TP	N8890A-1TP ^{1,2}
		Server-based	N5435A-124	

1. Requires software 5.00 and above.

2. Software 4.30 or above requires Windows 7. N2753A Infiniium Windows XP to 7 OS upgrade kit (oscilloscope already has M890 motherboard). N2754A Infiniium Windows XP to 7 OS and M890 motherboard upgrade kit (oscilloscope without M890 motherboard). Verify the M890 motherboard using the procedure found in the Windows 7 upgrade kit data sheet with the publication number 5990-8569EN.

Related Literature

Publication title	Publication number
N5435A Infiniium Server-Based License for Infiniium Oscilloscopes - Data Sheet	5989-6937EN
E2688A, N5384A High-Speed Serial Data Analysis and Clock Recovery Software - Data Sheet	5989-0108EN





www.axiestandard.org

AdvancedTCA® Extensions for Instrumentation and Test (AXIe) is an open standard that extends the AdvancedTCA for general purpose and semiconductor test. The business that became Keysight was a founding member of the AXIe consortium. ATCA®, AdvancedTCA®, and the ATCA logo are registered US trademarks of the PCI Industrial Computer Manufacturers Group.



www.lxistandard.org

LAN eXtensions for Instruments puts the power of Ethernet and the Web inside your test systems. The business that became Keysight was a founding member of the LXI consortium.



www.pxisa.org

PCI eXtensions for Instrumentation (PXI) modular instrumentation delivers a rugged, PC-based high-performance measurement and automation system.

Download your next insight

Keysight software is downloadable expertise. From first simulation through first customer shipment, we deliver the tools your team needs to accelerate from data to information to actionable insight.

- Electronic design automation (EDA) software
- Application software
- Programming environments
- Productivity software



Learn more at

www.keysight.com/find/software

Start with a 30-day free trial.

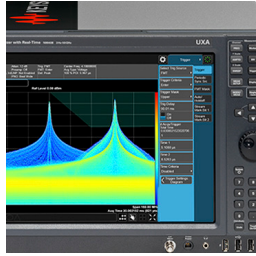
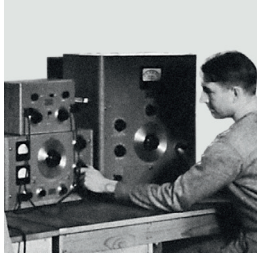
www.keysight.com/find/free_trials



Evolving Since 1939

Our unique combination of hardware, software, services, and people can help you reach your next breakthrough. We are unlocking the future of technology.

From Hewlett-Packard to Agilent to Keysight.



myKeysight

myKeysight

www.keysight.com/find/mykeysight

A personalized view into the information most relevant to you.

www.keysight.com/find/emt_product_registration

Register your products to get up-to-date product information and find warranty information.

KEYSIGHT SERVICES

Accelerate Technology Adoption.
Lower costs.

Keysight Services

www.keysight.com/find/service

Keysight Services can help from acquisition to renewal across your instrument's lifecycle. Our comprehensive service offerings—one-stop calibration, repair, asset management, technology refresh, consulting, training and more—helps you improve product quality and lower costs.



Keysight Assurance Plans

www.keysight.com/find/AssurancePlans

Up to ten years of protection and no budgetary surprises to ensure your instruments are operating to specification, so you can rely on accurate measurements.

Keysight Channel Partners

www.keysight.com/find/channelpartners

Get the best of both worlds: Keysight's measurement expertise and product breadth, combined with channel partner convenience.

For more information on Keysight Technologies' products, applications or services, please contact your local Keysight office. The complete list is available at:

www.keysight.com/find/contactus

Americas

Canada	(877) 894 4414
Brazil	55 11 3351 7010
Mexico	001 800 254 2440
United States	(800) 829 4444

Asia Pacific

Australia	1 800 629 485
China	800 810 0189
Hong Kong	800 938 693
India	1 800 11 2626
Japan	0120 (421) 345
Korea	080 769 0800
Malaysia	1 800 888 848
Singapore	1 800 375 8100
Taiwan	0800 047 866
Other AP Countries	(65) 6375 8100

Europe & Middle East

Austria	0800 001122
Belgium	0800 58580
Finland	0800 523252
France	0805 980333
Germany	0800 6270999
Ireland	1800 832700
Israel	1 809 343051
Italy	800 599100
Luxembourg	+32 800 58580
Netherlands	0800 0233200
Russia	8800 5009286
Spain	800 000154
Sweden	0200 882255
Switzerland	0800 805353
	Opt. 1 (DE)
	Opt. 2 (FR)
	Opt. 3 (IT)
United Kingdom	0800 0260637

For other unlisted countries:

www.keysight.com/find/contactus
(BP-9-7-17)

DEKRA Certified
ISO 9001 Quality Management System

www.keysight.com/go/quality

Keysight Technologies, Inc.
DEKRA Certified ISO 9001:2015
Quality Management System

This information is subject to change without notice.

© Keysight Technologies, 2017
Published in USA, December 1, 2017
5991-4904EN
www.keysight.com

