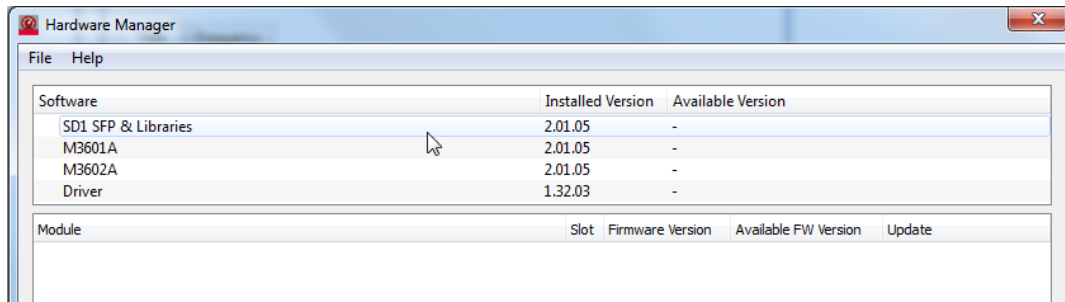


M360XA Set Up License Instructions

IMPORTANT NOTE: When contacting Keysight support, please include the following information:

- Operative System is used, like Windows 7 64-bit.
- Software product name and its version. The version of software can be found in the splash screen or using “Help->About...” menu using software main window.
- Screenshot of the Hardware Manager dialog. It can be opened in SDI SFP (though “Help>Hardware Manager” menu action), like:

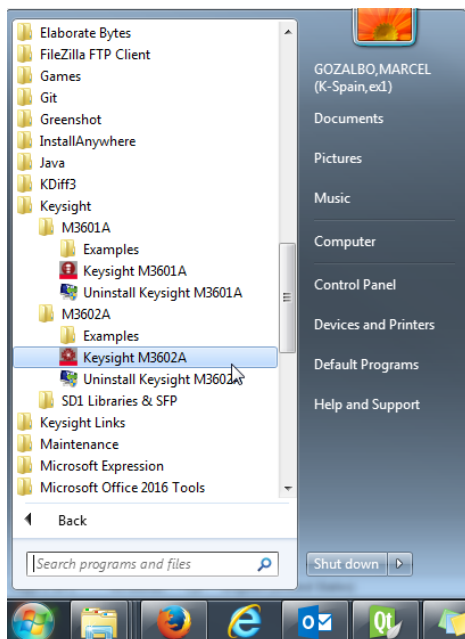


NOTE: This document is created using Microsoft Windows 7 64-bit OS PC screenshots, but the same actions can be applied using the other supported software platforms.

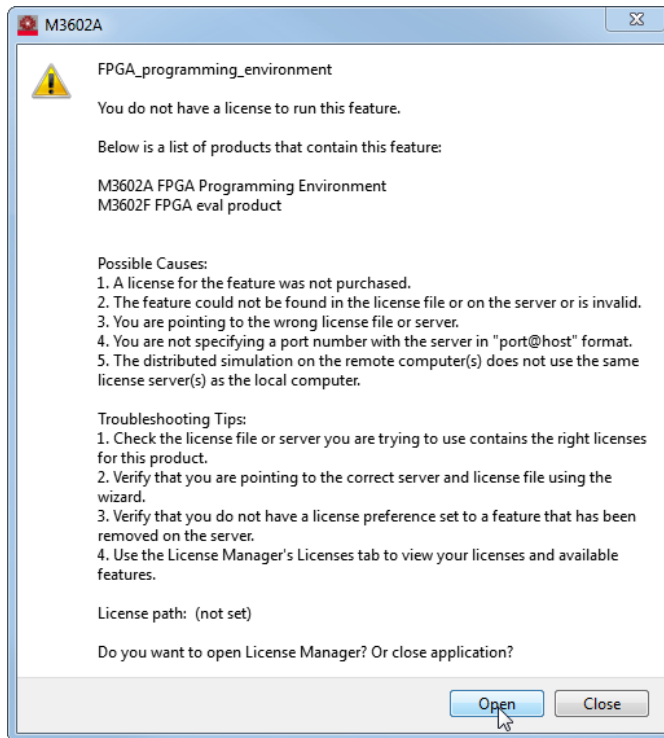
NOTE: These instructions are created using M3602A software, but it is the same process for M3601A software.

First software usage

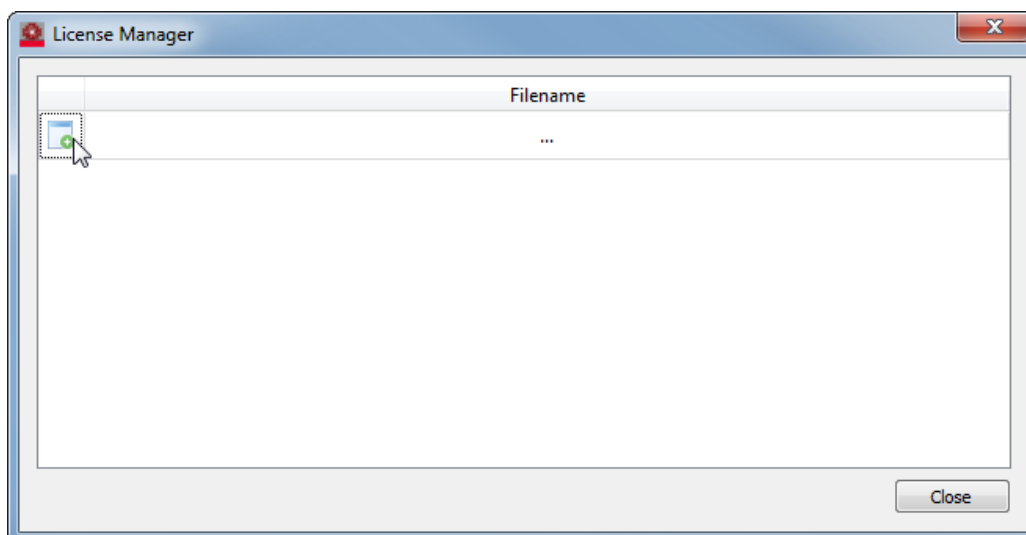
1. Open the software from Windows start button.



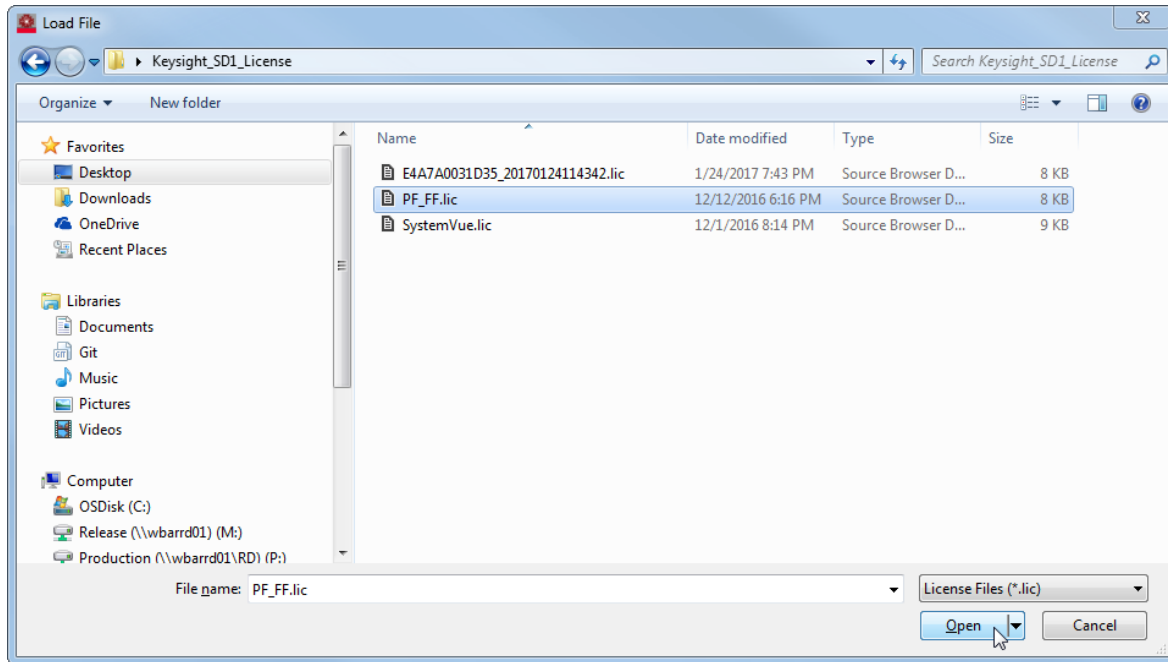
- The software will show a dialog about licensing step failed, because no license has been set yet. Click open button.



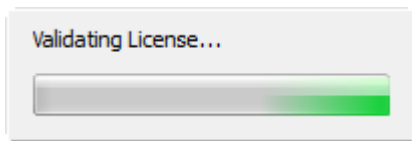
- The License Manager dialog appears. Notice that any previous license is showed because is the first use of software. Click on "Add License" icon.



4. Search the license file of the software in the computer and open it in file selection dialog.



5. Then close the License Manager dialog and wait until the license is validated.

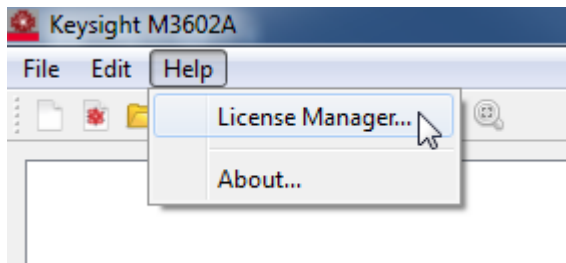


6. If the license is loaded successfully, the program shows the main window and it is ready for use. Otherwise, if the license is not valid the program will ask again a valid license.

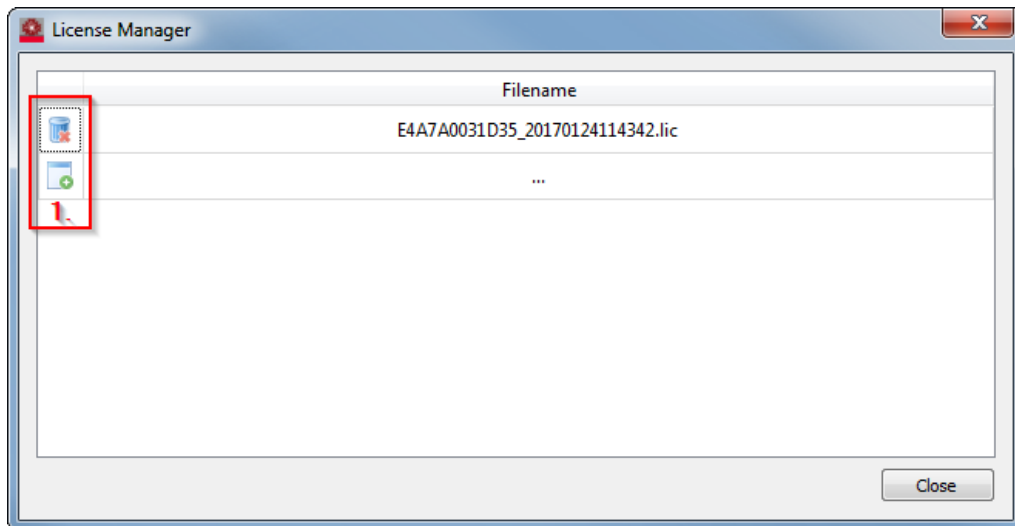
Manage licenses

For managing software licenses, the License Manager dialog is needed:

1. Open the software from Windows start button.
2. In the software main window, click “Help->License Manager...”

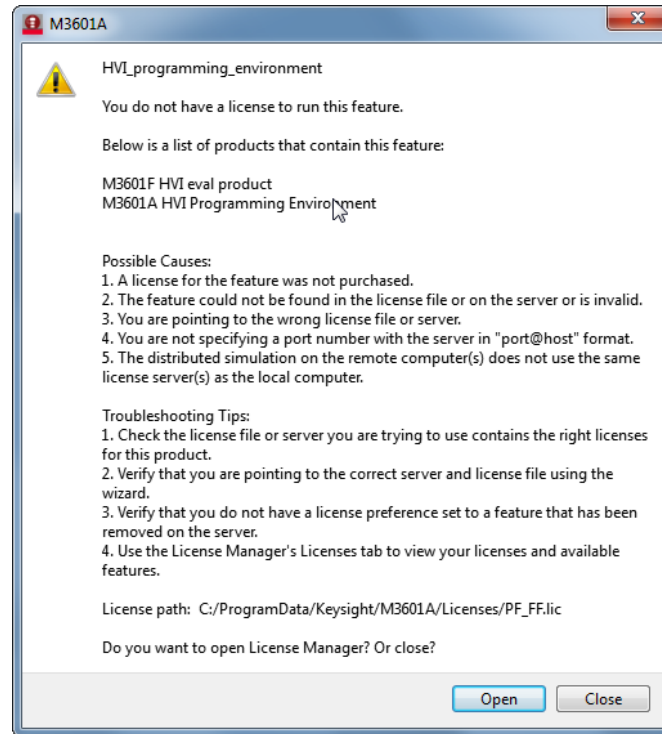


3. The License Dialog appears. Use the Add/Remove license icons (1. In below picture) for managing software licenses.



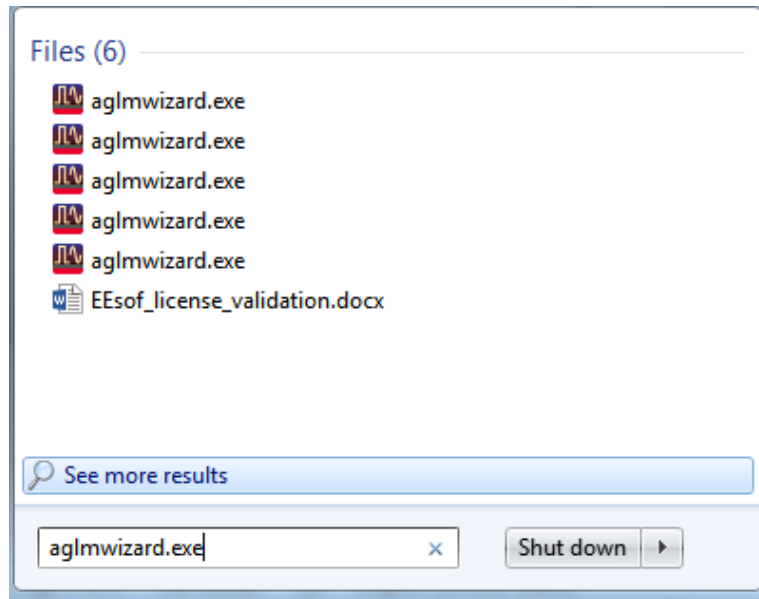
License troubleshooting

If the M360XA software shows a license error message after setting the license to License Manager dialog, like the image below, please follow the next steps.

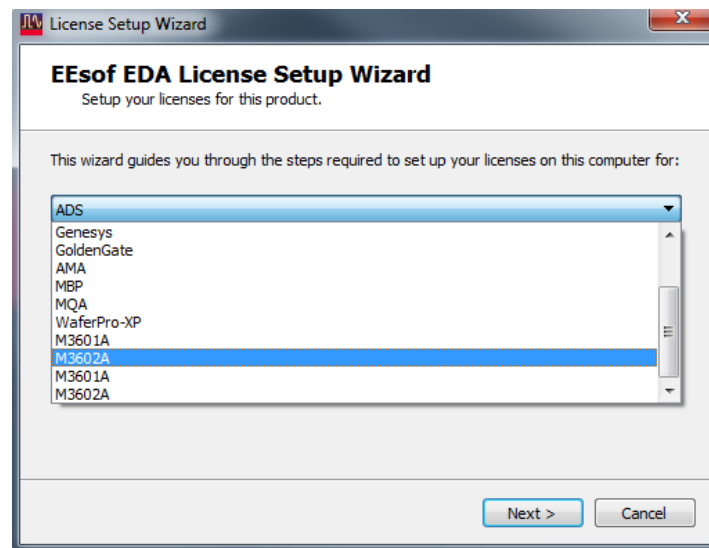


1. Check if the EEsof License Tools are installed:
 - a. By default, on Windows they are installed in "C:\Program Files\Keysight\EEsof_License_Tools\bin\". Check if this location exists.
 - b. Otherwise, search the "EEsof License Tools" entry in the installed software manager of the Operative System (p. e. "Programs and Features" panel on Windows 7).

✓ If the EEsof License Tools are not present in the computer, please install them from <http://edadocs.software.keysight.com/display/downloads/Licensing+Software+Downloads> webpage, reinstall the M360XA software and start again setting up license from the beginning.
2. With EEsof License Tools installed, open the EEsof License Manager Wizard ("aglmwizard"):
 - a. By default, it is installed on Windows in "C:\Program Files\Keysight\EEsof_License_Tools\bin\".
 - b. It can be also found searching the program directly with OS find software tool. For example, on Windows it can be found using the Start Menu and typing the name of the program in the search entry, like:

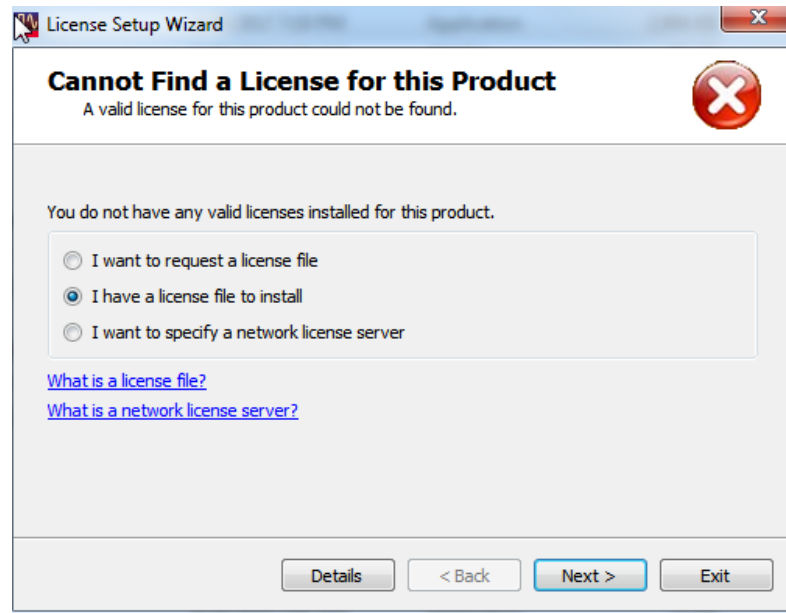


3. Then, select the first entry of M3601A or M3602A, depending on software license file is wanted to check.

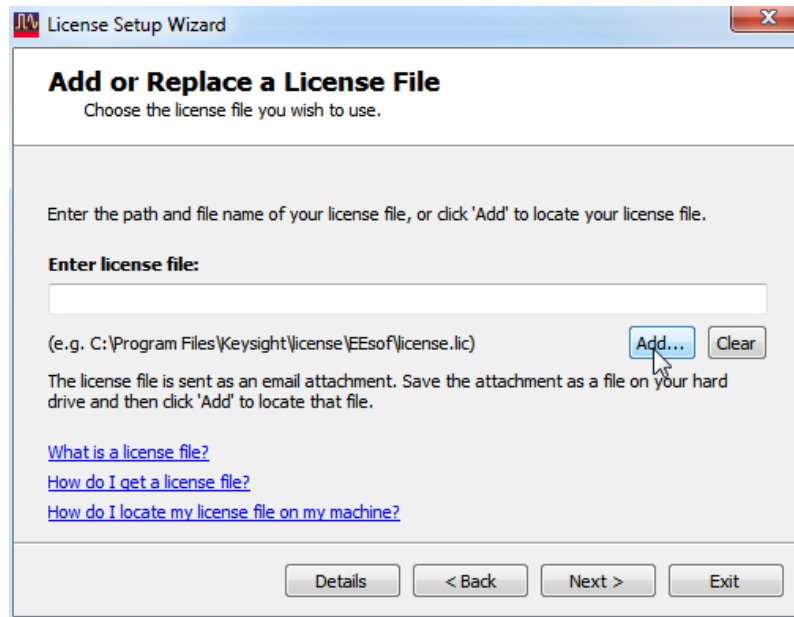


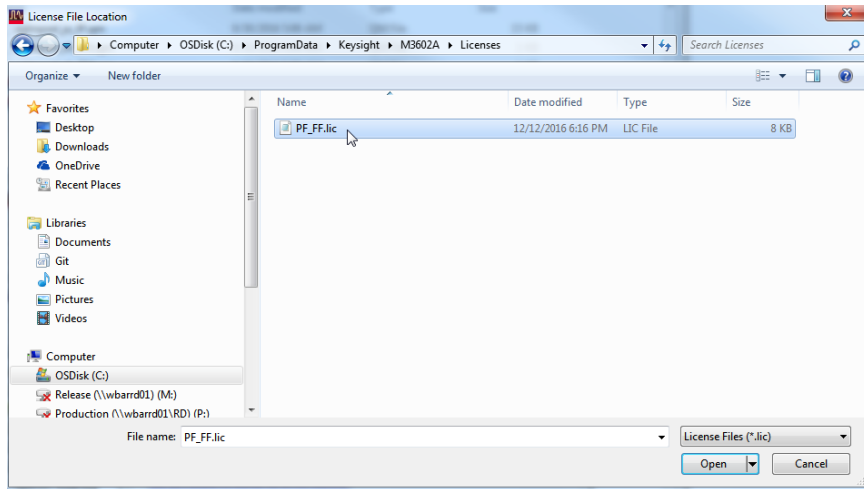
- ✓ If the expected M3601A or M3602A software entry does not appear, REINSTALL the missing software, using the correspondent installer. This happens when the EEsof License Tools are installed or updated after the M360xA installation.
If after reinstalling the software the M360xA software entry still doesn't appear in this dialog as an option to select, please contact CSG support with screenshot of this step as shown above.

4. Click Next button and select "I have a license file to install" option:



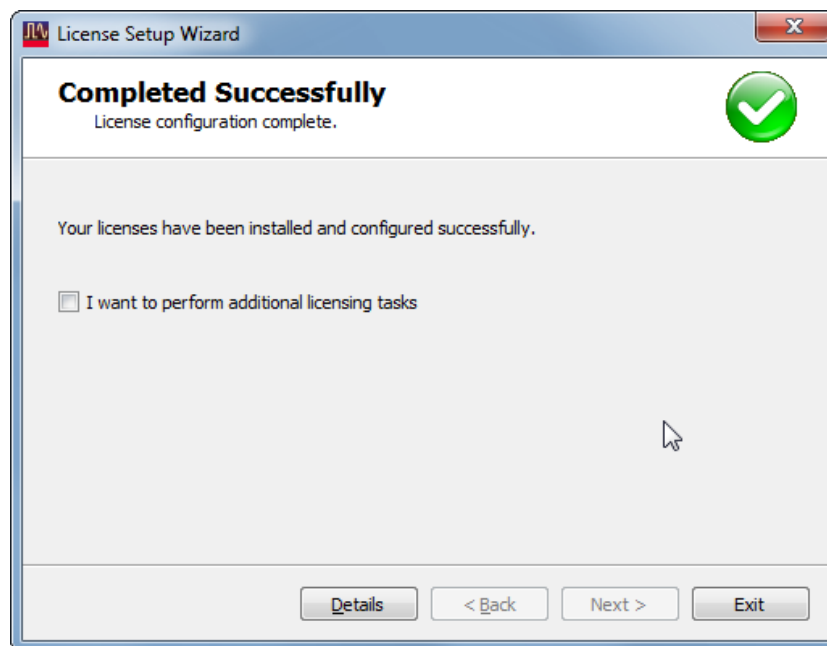
5. Click Next button and insert the license file using Add... button:





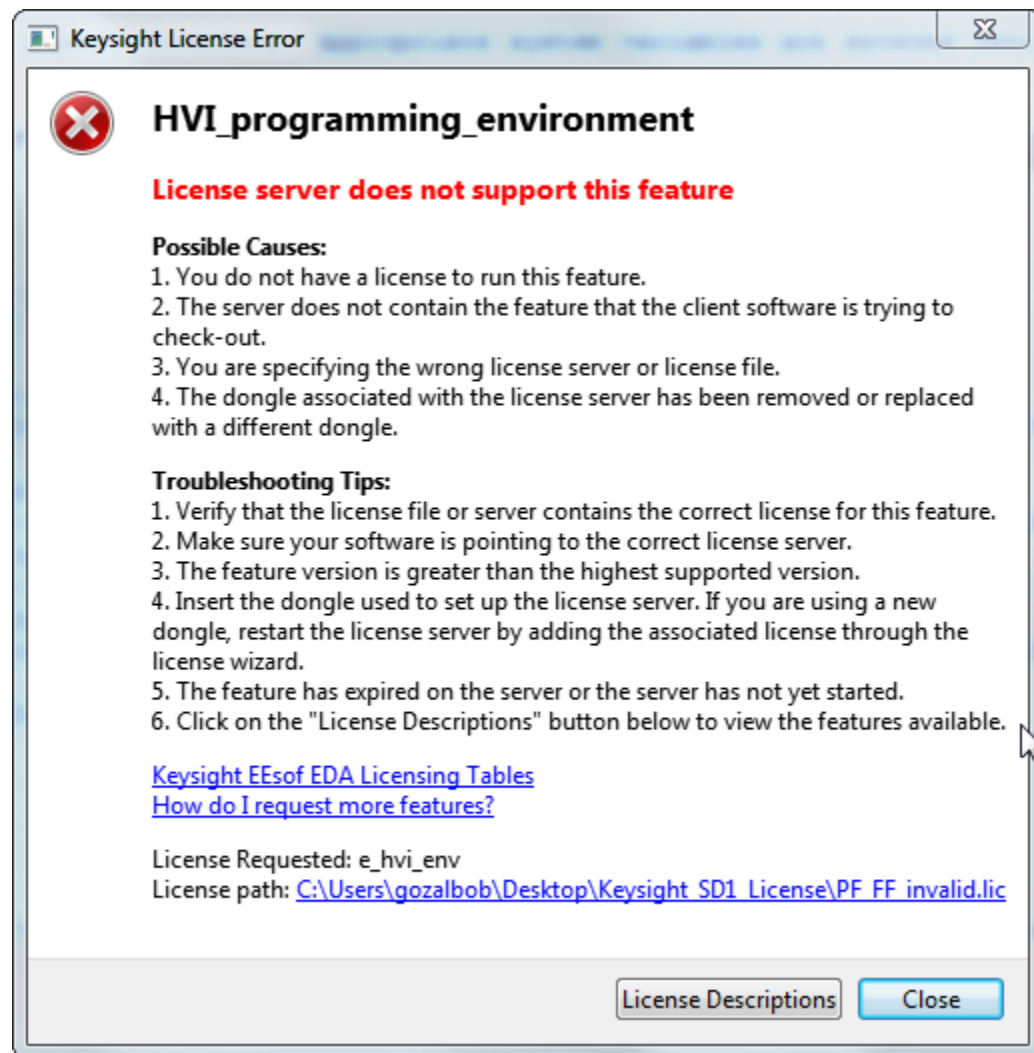
6. Click Next button after adding the license file and check the status on the next dialog:

- **CORRECT:**



- ✓ If after this successfully configuration license M360xA does not validate correctly the license, please contact CSG support.

- **ERROR:**



- ✓ If software shows this error, please request a new license or contact EEsof support.