

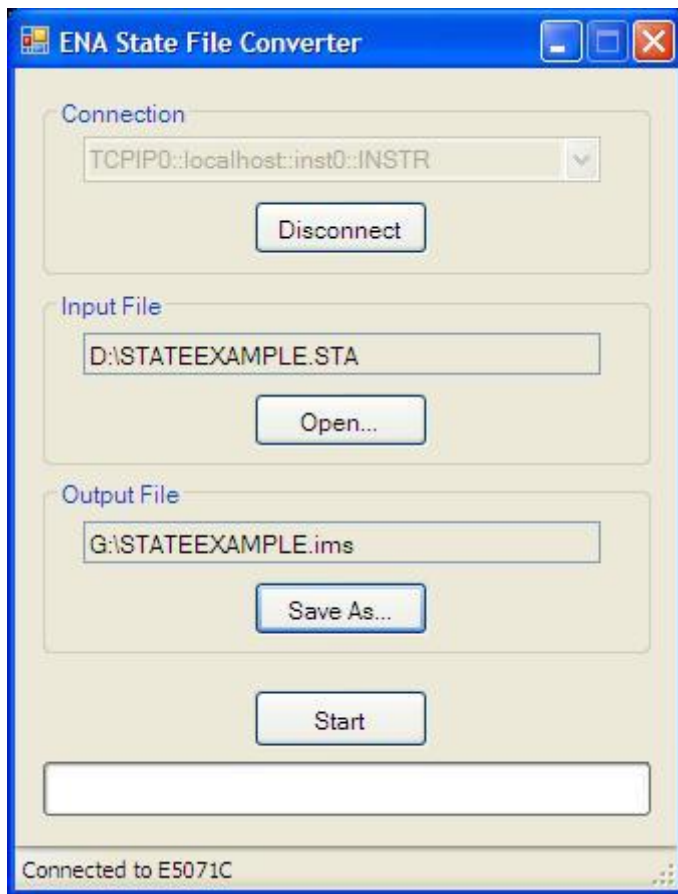
## State file converter from E5071C to E5080A

### Overview:

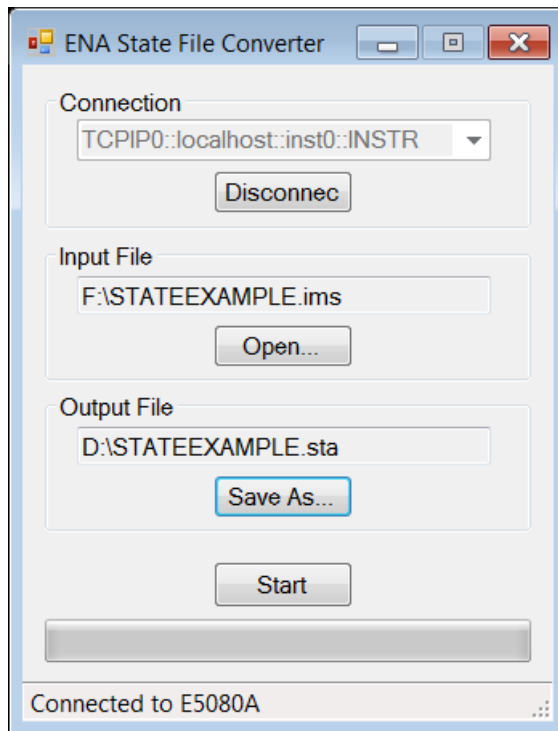
The state file converter allows you to convert from the state file which is stored by the E5071C to that can be loaded by the E5080A. The E5071C user can make the same measurement setup on the E5080A easily.

### Procedure:

1. Download the state file converter software (StateFileConverter.exe and Ivi.Visa.Interop.dll).
2. Save these two files in an USB pen drive.
3. Connect the USB pen drive to the E5071C USB.
4. Save your desired state file of the E5071C.
5. Execute state converter software.
6. Click "Connect" in Connection.
7. Specify the state file as "Input File".
8. Specify the output file name in your USB pen drive directory as "Output File". The output file has .ims extension.



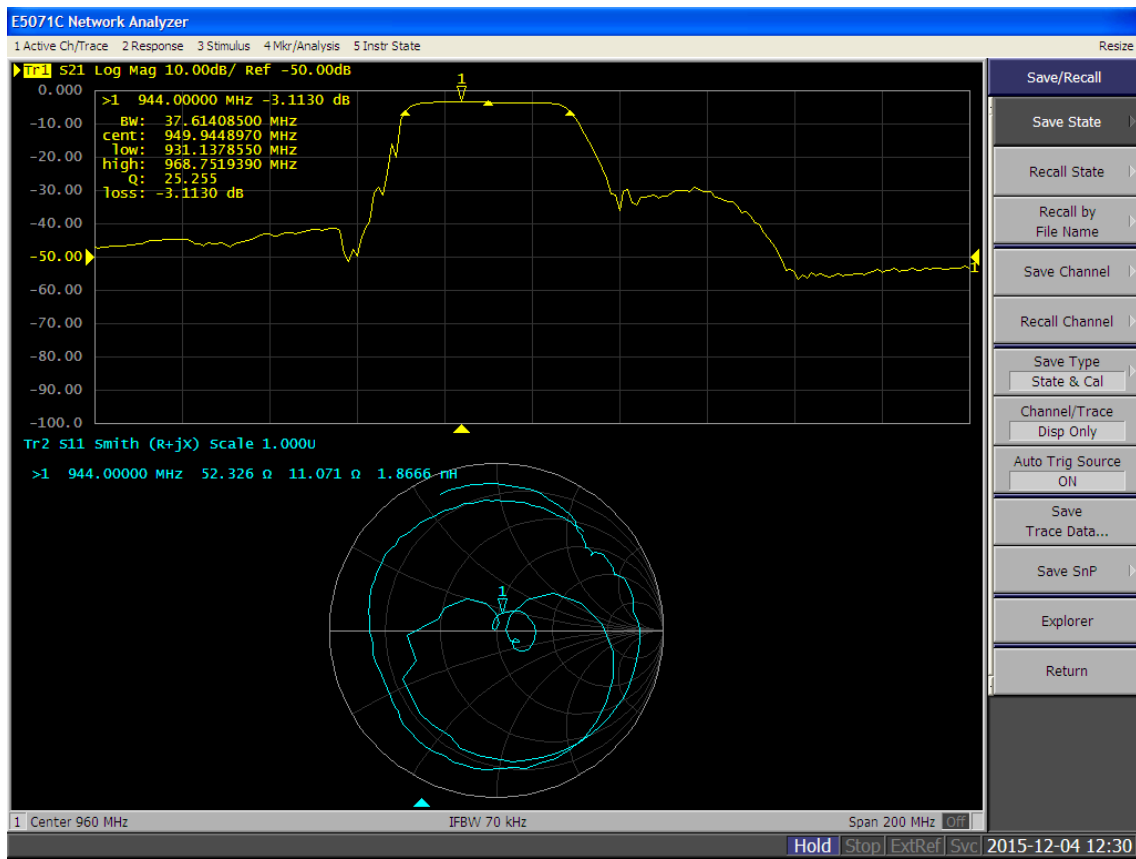
9. Click Start to convert the state file to .ims file.
10. Remove your USB pen drive from the E5071C.
11. Connect the USB pen drive to the E5080A USB port.
12. Execute state converter software.
13. Click "Connect" in Connection.
14. Specify the .ims file in your USB pen drive directory as "Input File".
15. Specify the output file name as "Output File". The output file has .sta extension.



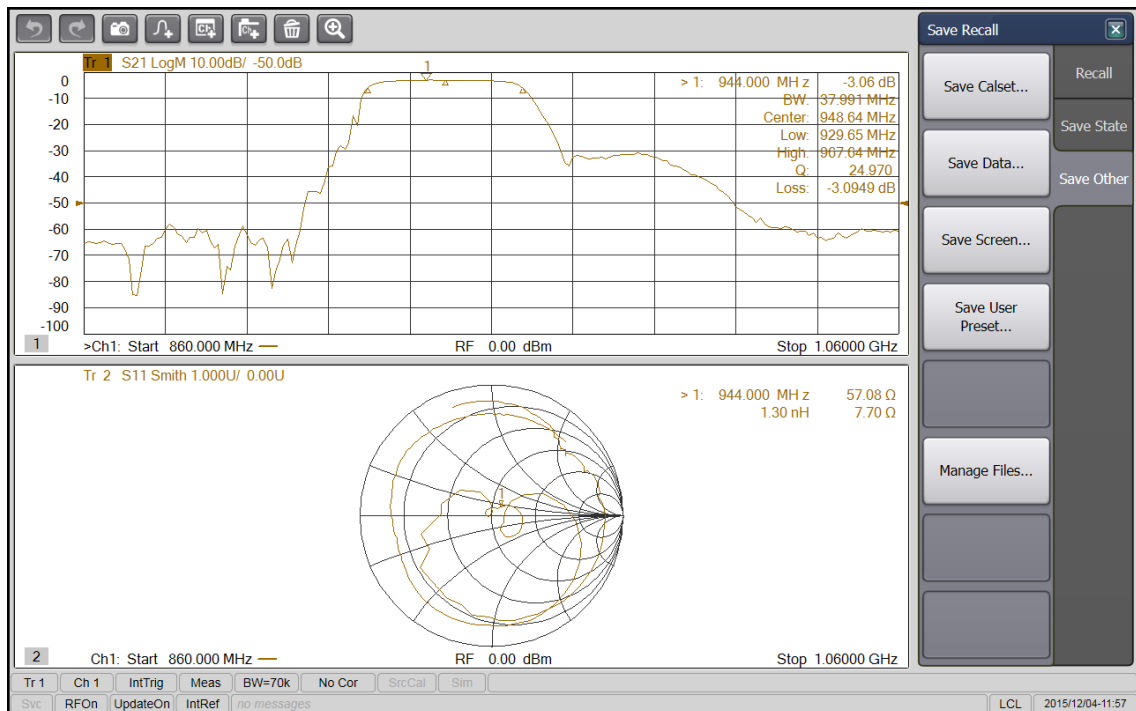
16. Click Start to convert the .ims file to state file and setting is automatically loaded.

Example of conversion:

E5071C Setup Example



## Conversion result on the E5080A



### Limitation

Some states are not converted correctly. The limitations of conversion are shown below.

- calibration and trace data are excluded from the state file.
- The setting of marker is converted only for the displayed markers on the E5071C. If the marker is off, the setting for marker is not converted.
- The setting of common port impedance conversion, differential port impedance conversion, differential matching is converted only when the topology of balance measurement is set at Balance-Balance.
- The assigned port numbers for 4/6/8-port network embedding/de-embedding feature are converted only for the selected connection type (topology).
- The touch stone filename for embedding, de-embedding and port matching is not converted
- The multiport test set setup is converted only when the E5092A is selected as the test set.
- Correction status is not converted (Correction data cannot be moved).

The state file converter uses the code emulator function to convert the state. Hence, the limitation of conversion is the same as the code emulator. See the

<http://ctdkobe->

[lpu.png.is.keysight.com/webhelp/vna/programming/code\\_emulator\\_for\\_e5071c.htm](http://lpu.png.is.keysight.com/webhelp/vna/programming/code_emulator_for_e5071c.htm)

for the limitation.

### Note

- Marker(s) may appear after conversion even markers are not displayed on the E5071C.